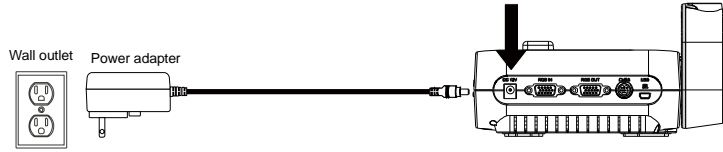


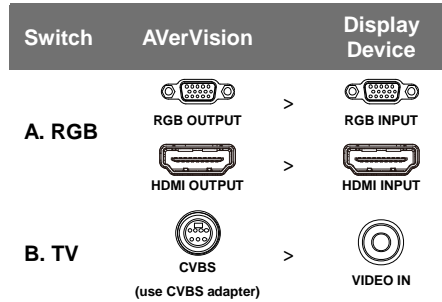
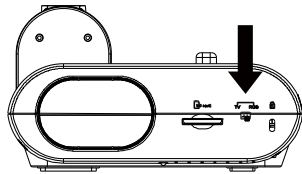
AVerVision F17HD

Quick Guide

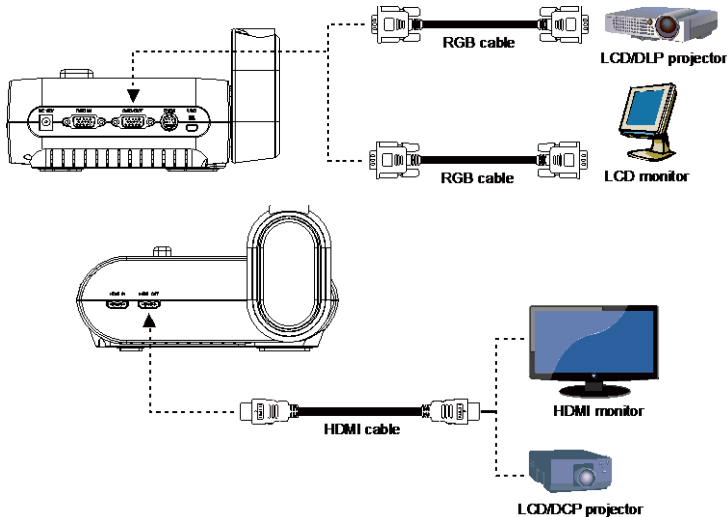
(1)



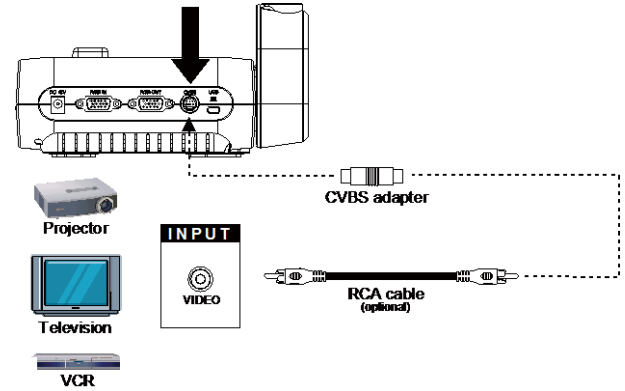
(2)



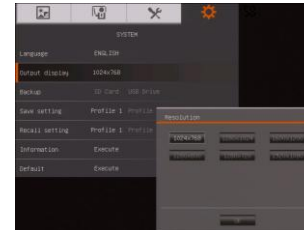
(3-A)



(3-B)



(4)



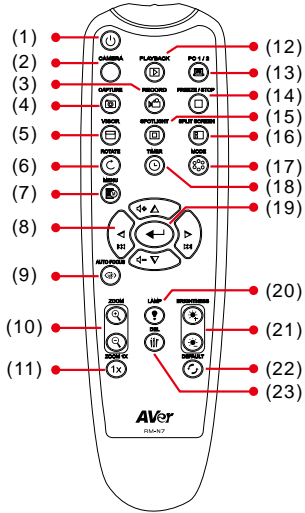
Output Display

Set the resolution to display the image on screen. This selection will be disabled in TV output mode.

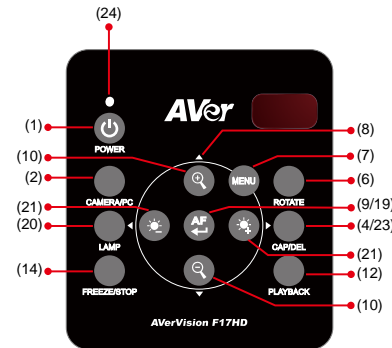
Remote Control

The remote control requires two (2) “AAA” size batteries (supplied), make sure batteries are installed properly before use.

Name	Function
(1) POWER	Turn the unit on/standby.
(2) CAMERA	Camera mode displays the video signal from the built-in camera.
(3) RECORDING	The recording function doesn't support on AVerVision F17HD.
(4) CAPTURE	Capture still image in Camera mode. In continuous capture mode, press this button again to stop.
(5) Visor	Cover part of the presentation screen and allow presenter to reveal the material as desire.
(6) ROTATE	Rotate the image by 90° in Camera mode and Playback mode.
(7) MENU PIP	Open and exit the OSD menu. Show a thumbnail size captured picture from the memory at the corner of the screen in Camera mode.
(8) ▲, ▼, ◀, & ▶	<ul style="list-style-type: none"> - From remote control to pan the image when is above 2X in live mode or playback captured image mode. - Move the selection in Playback mode and in OSD menu. - Move the Spotlight frame and Visor screen cover.
(9) AUTO FOCUS	Adjust the focus automatically.
(10) ZOOM +/-	Increase/decrease the image magnification in camera and picture playback mode.
(11) ZOOM RESET	Reset zoom level to 100%.
(12) PLAYBACK	View the captured picture from the memory in 16-thumbnail images.
(13) PC 1/2	PC mode displays the video signal from the RGB/HDMI INPUT port of F17HD.
(14) FREEZE / STOP	Freeze live images.



Name	Function
(15) SPOTLIGHT	Call the Spotlight submenu. Spotlight overlays a box frame on the presentation screen. You can adjust the box size and move it around.
(16) SPLIT SCREEN	Divide the screen into two. One side displays the live image from the built-in camera and the other side displays 8-thumbnail size picture from the memory.
(17) MODE	Select from 4 type of modes: Sharp - adjust the contrast along the edges making text appear more visible. Graphics - adjust the gradient of image. Motion - increase frame rate. Sufficient lighting is required when using this mode. Microscope - automatically adjust optical zoom for microscopic viewing.
(18) TIMER	Start/Pause/Stop the timer countdown and set the timer duration.
(19) ⏪	Make a selection in Playback mode and OSD menu.
(20) LAMP	Turn the overhead light on/off.
(21) BRIGHTNESS +/-	Adjust the brightness.
(22) DEFAULT	Reset at factory default setting.
(23) DEL	Delete the selected picture in Playback mode.



Name	Function
(24) Power LED indicator	<ul style="list-style-type: none"> - Red: Standby - Green: RGB/HDMI output - Orange: TV output

For User Manual and Software, please visit the link below.

<http://averusa.com/classroom-technology/support/>

For Warranty information, please visit the link below.

<http://www.averusa.com/classroom-technology/support/warranty.asp>