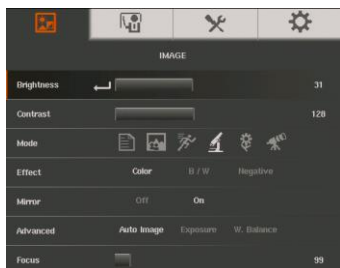


OSD MENU

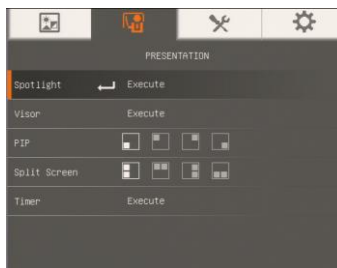
There are 4 tabs on the OSD menu: IMAGE, PRESENTATION, SETTING and SYSTEM. In Playback mode, you can access PLAYBACK OSD menu to enable the Slide Show feature and modify Slide Show interval and transition setting if desire.



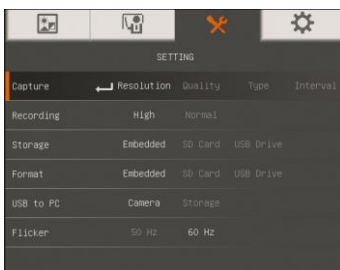
For TV output, the RESOLUTION will be disabled in SETTING menu list.



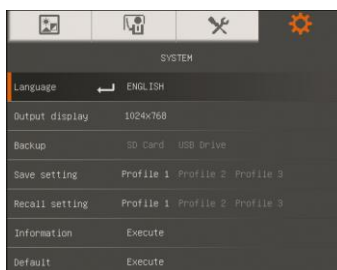
IMAGE



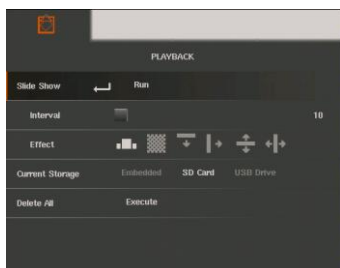
PRESENTATION



SETTING



SYSTEM



PLAYBACK

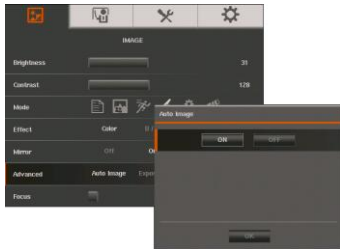


ANNOTATION

Navigate the Menu and Submenu



1. Press MENU button on the remote or control panel.
2. Press ► and ◀ to toggle between tabs
3. Press ▼ and ▲ to choose a selection in the menu list.
4. Press ◀ to make a selection.
5. Use ► and ◀ to adjust the setting or make a selection.
6. Press ◀ to enter submenu.
7. Press MENU to close the OSD menu.



Image

Menu Screen

Function



Brightness

Adjust brightness level manually between 0 and 63.



Contrast

Adjust the contrast level manually between 0 and 255 under bright and dark environments.


Menu Screen





Function


Mode


Select from the various image display settings.


 **Sharp** - adjust the contrast along the edges making text appear more visible. Viewing the subject from 32-36 cm (16X zoom) away from the camera.

 **Graphics** - adjust the gradient of image. Viewing the subject from 32-36 cm (16X zoom) away from the camera.

 **Motion** - increase frame rate. Sufficient lighting is required when using this mode. Viewing the subject from 32-36 cm (16X zoom) away from the camera.

 **Microscope** - automatically adjust optical zoom for microscopic viewing.

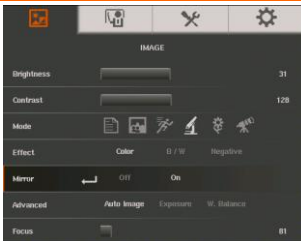
 **Macro** - set to view when object is only 10-32cm (5X zoom) away from the camera.

 **Infinite** - set to view when subject is from 36 cm to infinity (Max.16X) and further away from the camera.



Effect

Convert the image into positive (true color), monochrome (black and white) or negative.

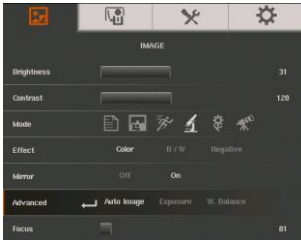


Mirror

Select to flip the image in Camera mode.

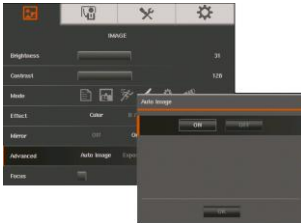
Menu Screen

Function



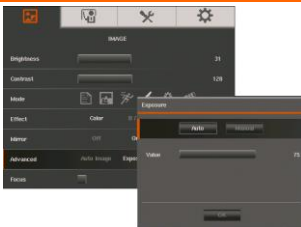
Advanced

Select to set the Auto Image, Exposure, and White Balance settings.



Auto Image

Select ON or OFF to automatically adjust the white balance and exposure setting, and correct the color and exposure compensation.

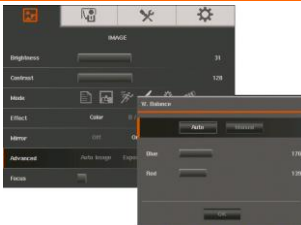


Exposure

Select the exposure setting.

AUTO - automatically adjust the camera exposure and the amount of light required.

MANUAL - manually adjust the exposure level. The exposure can be adjusted up to 99.



White Balance

Select the White Balance setting for various light conditions or color temperature.

AUTO - automatically adjust the white balance.

MANUAL - manually adjust the red and blue color level. The color level can be adjusted up to 255.



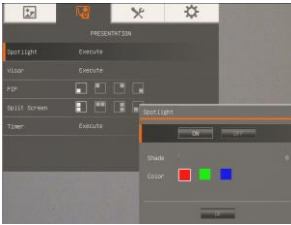
Focus

Manually adjust the focus.

Presentation

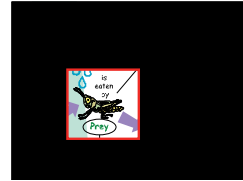
Menu Screen

Function




Spotlight


Spotlight overlays a frame on the presentation screen. You can move the Spotlight around the presentation screen using the ▲, ▼, ◀, & ▶ buttons. Select Execute to call the Spotlight submenu.






In the Spotlight submenu, the following options are available.

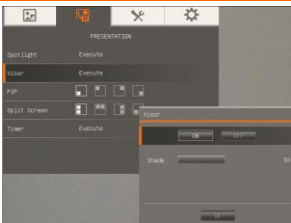
ON/OFF – select to run/cancel

the Spotlight. Press  to move to the next selection.

Shade – set the opacity level of the area outside the box. The shaded area will completely turn black when it is set to level 100. Press  to move to the next selection.

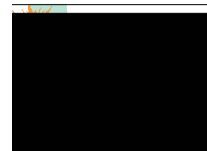
Color – select the Spotlight frame color. Press  to move to the next selection.

OK – press  for the setting to take effect. If you select ON, the frame will appear and blink, use the ▲, ▼, ◀, & ▶ buttons to adjust the frame size and press  to set the desired size; and OFF will close the submenu.

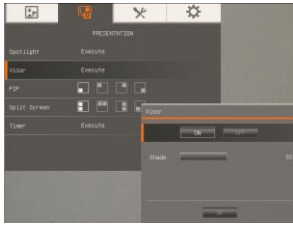


Visor

Visor covers the presentation screen. The upper part of the presentation screen is slightly exposed. Use the ▲, ▼, ◀, & ▶ buttons to reveal more of the covered area. Select Execute to call the Visor submenu.




Menu Screen





Function

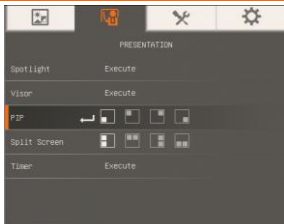
In the Visor submenu, the following options are available.



ON/OFF – select to run/cancel the Visor. Press  to move to the next selection.





Shade – set the opacity level of the covered area. The shaded area will completely turns black when it is set to level 100. Press  to move to the next selection.

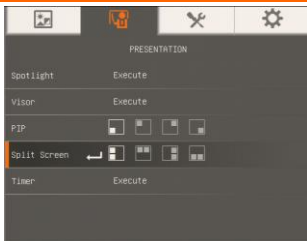
OK – press  for the setting to take effect. If you select ON, upper part of the presentation screen is slightly exposed. Use the ▲, ▼, ◀, & ▶ buttons to reveal more of the covered area; and OFF will close the submenu.



PIP

Select the thumbnail playback screen location and show the thumbnail playback screen at the corner of the screen to recall the captured image from the memory in Camera mode. Select OFF to cancel PIP.

-  Lower Left
-  Upper Left
-  Upper Right
-  Lower Right



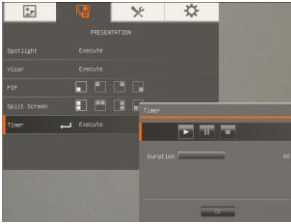
Split Screen

Divide the screen into two parts. Half of the screen displays the 8-thumbnail images and the other half display the image from the AVerVision F15 camera.

Select the display location of the 8- thumbnail playback images. Select OFF to cancel Split Screen.

-  Left
-  Right
-  Top
-  Below

Menu Screen



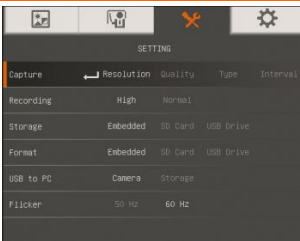
Function

Timer

Start/Pause/Stop the timer and set the timer duration. The timer automatically counts up after the count down reaches zero to show the elapsed time. Even when you switch between Playback, PC or Camera modes, the timer will continue.

Setting

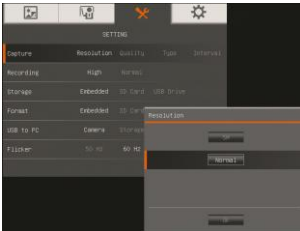
Menu Screen



Function

Capture

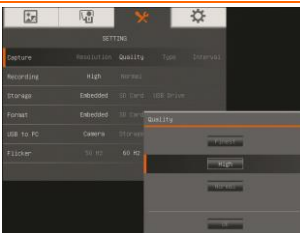
Select to set the capture resolution, quality, type and interval settings.



Resolution

Select the capture size. In 5M setting, the capture resolution size is 2560 X 1920.

If the output display setting is in 1280 x 720 or 1920 x1080, the capture resolution size will be 2560 x 1440 and as for 1280 x 800 output display the capture size will be 2560 x 1600.

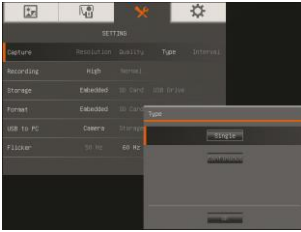


Quality

Select the capture compression setting.

Menu Screen

Function

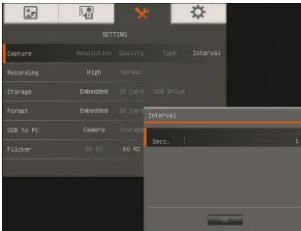


Type

Select the capture type.

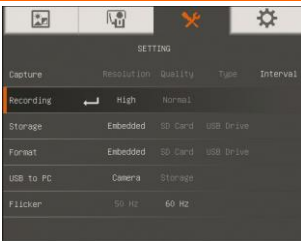
Single - capture one picture only.

Continuous - capture successive pictures.



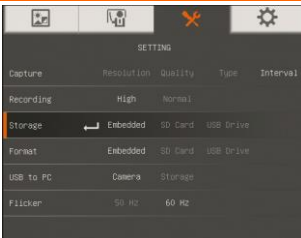
Interval

Set the time interval for continuous capture. The length can be set up to 600 sec (10 min).



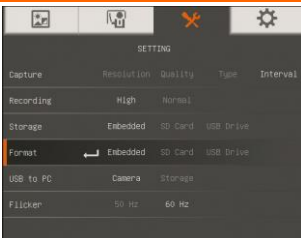
Recording

Select the video recording compression setting.



Storage

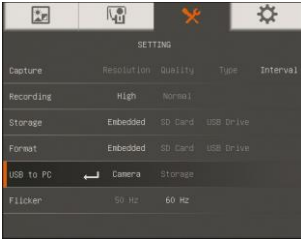
Change the storage location. Audio & video recording can only be saved in SD memory card or USB flash drive.



Format

Format to delete all the data in the selected memory.

Menu Screen



Function

USB to PC

Select the status of the AVerVision F15 when it is connected to the computer via USB. Make sure the USB switch on the rear panel is set to **PC**.

Camera - can be used as a computer webcam or with our bundled software to record video and capture still image.

Storage - transfer the captured pictures/videos from the memory to computer hard disk.

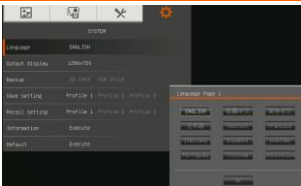


Flicker

Select between 50Hz or 60Hz. Some display devices cannot handle high refresh rates. The image will flicker a couple of times as the output is switched to another refresh rate.

System

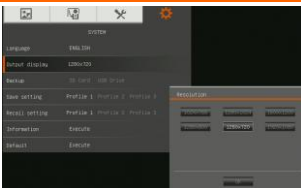
Menu Screen



Function

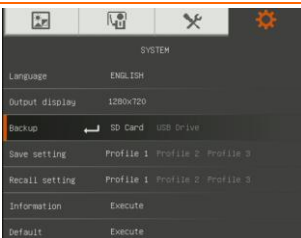
Language

Change and select different language.



Output Display

Set the resolution to display the image on screen. This selection will be disabled in TV output mode.

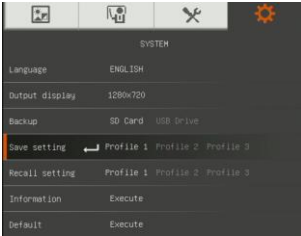


Backup

Copy the image from the built-in memory to SD card or USB flash drive.

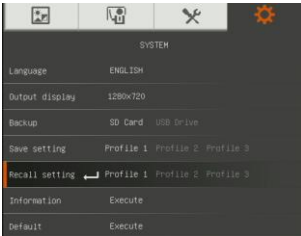
Menu Screen

Function



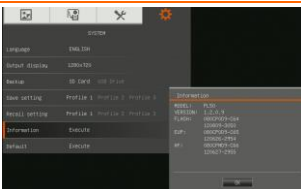
Save Setting

Save the current setting in the selected profile number. Only brightness, contrast, image mode, effect, auto image setting, flicker, recording quality, capture resolution, and capture quality can be saved.



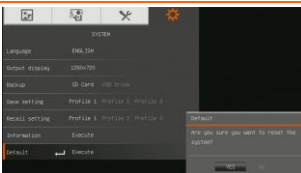
Recall Setting

Restore the setting back to the selected profile number.



Information

Display the product information.



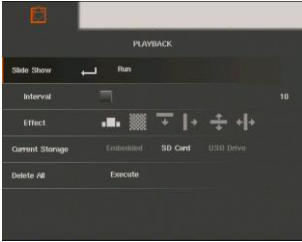
Default

Restore all the settings into original factory default setting.

Playback

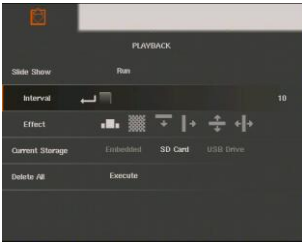
Menu Screen

Function



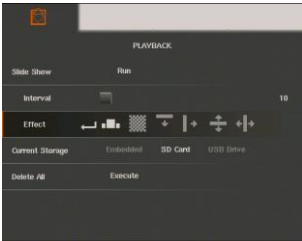
Slide Show

Display all captured still pictures in an automated slide show. The video file will be skipped.



Interval

Set the interval before displaying the next picture. The length can be set up to 100 sec.



Slide Show Effect

Select the slide show transition effect.



Slide image



Wipe right



Checker down



Split Vertical Out



Wipe down

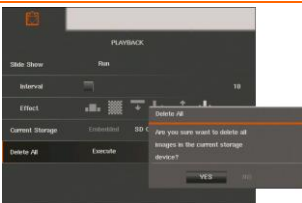


Split Horizontal Out



Current Storage

Select the source of the images.



Delete All

Permanently delete all the data in selected memory source. A Warning Message will appear. Select YES to continue and NO to stop formatting the storage.

