

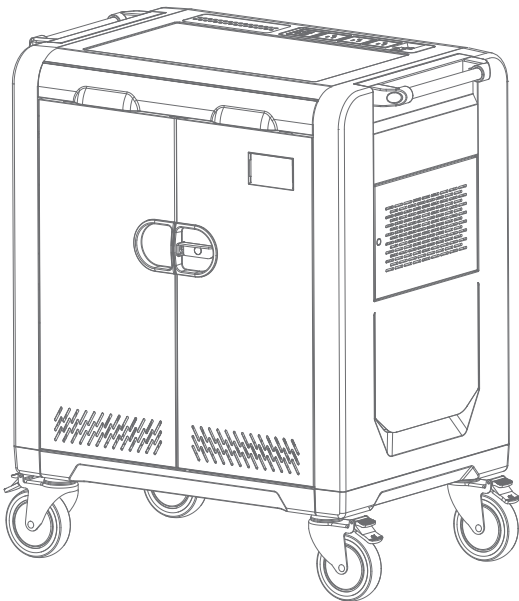
TabSync

User Manual

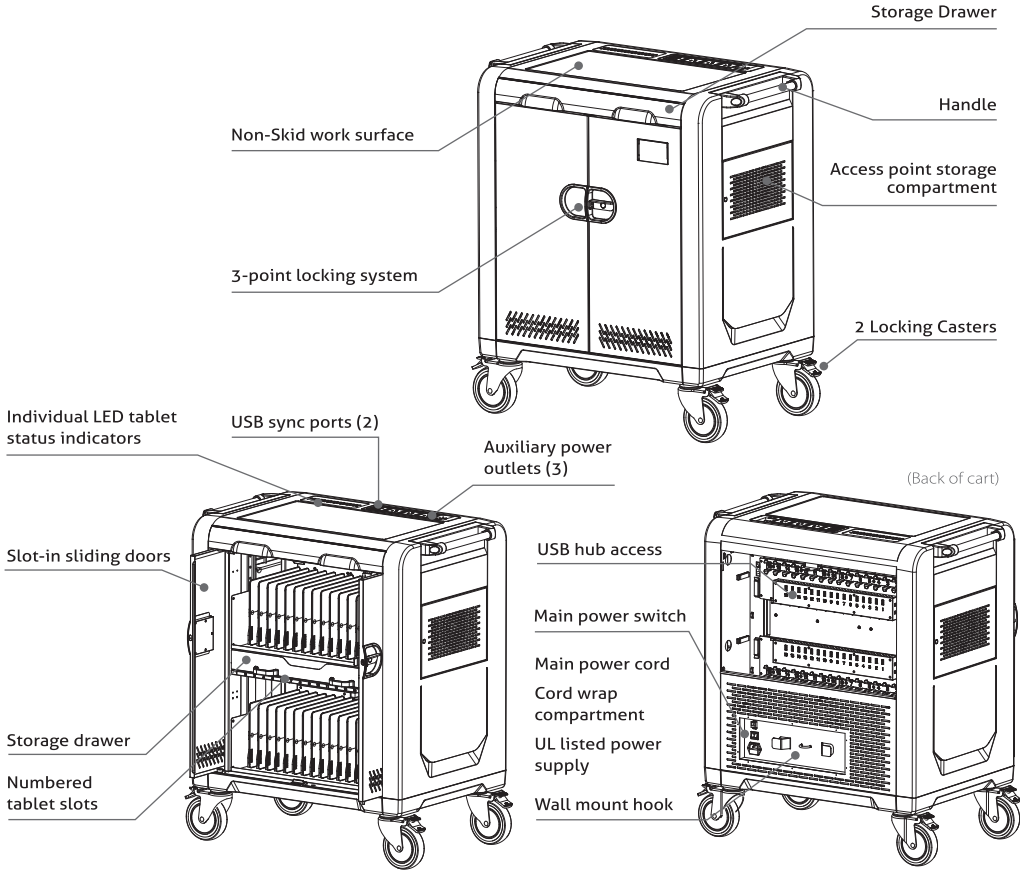
Table of Contents

Meet the new AVer TabSync. It's sleek, compact and full of energy. So much so that it can charge, sync, store, secure and transport up to 32 Tablets at the same time.

- 1. TabSync Features and Specifications P.02
- 2. Charging Tablet Devices P.03
- 3. Syncing Tablet Devices P.05
- 4. Cart and Equipment Safety P.08



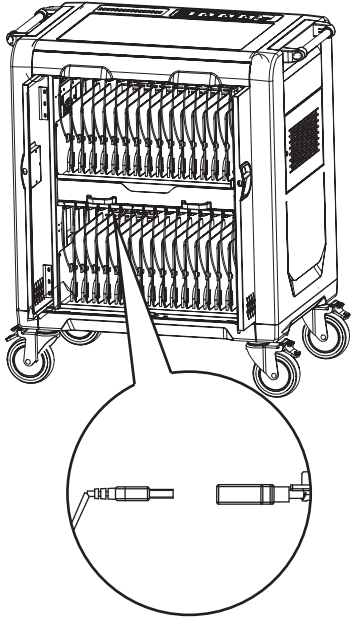
1. TabSync Features and Specifications



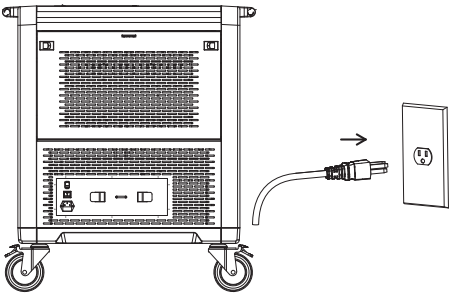
Specifications

Capacity	32	Tablet Compatibility	iPad Mini, iPad (Gen. 1-4), Kindle Fire, Galaxy (7" and 10"), Nexus (7"). Contact AVer rep. for complete compatibility list.
Max Tablet Size (Including Covers)	0.96W x 10.71H x 11.5D in (24W x 272H x 292D mm)	Auxiliary Power Outlets(3)	North America : AC 100-120V, 50/60Hz 8A (Max) Others: AC 100-240V, 50/60Hz, 8A (Max)
Cart Dimensions	32.28W x 36.61H x 21.65D in (820W x 930H x 550D mm)	Power Rating	North America : Input: AC 100-120V, 50/60Hz, 12A Output for USB Port(s): DC 5V, 2.1A Others : Input: AC 100-240V, 50/60Hz, 12A Output for USB Port(s): DC 5V, 2.1A
Cart Weight	160.94 lbs (73kg)		
Shipping Dimensions	32.87W x 43.31H x 22.64D in (835W x 1100H x 575D mm)		
Shipping Weight	189.6 lbs (86kgs)		
Assembly	Arrives fully assembled		

2. Charging Tablet Devices

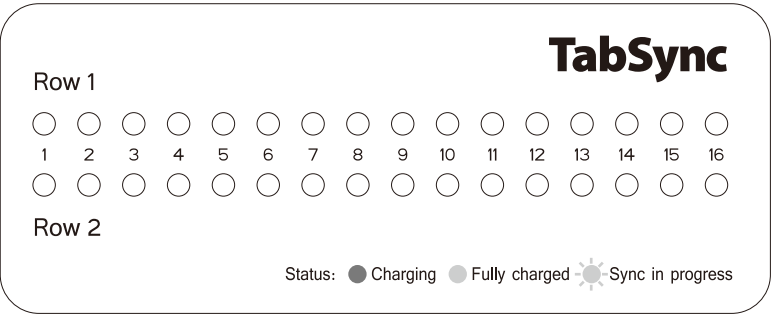


1. The cart arrives with USB 2.0 extension cables pre-wired.
2. Place a tablet device in any of TabSync's numbered slots.
3. Connect the tablet via dock connector or micro USB to the pre-wired USB extension port above. You can use the cables provided by the tablet manufacturer, or custom length cables from AVer (optional).
4. Tablet's will automatically begin charging once connected. If not, please check that the cart is plugged in and the power switch is ON.



NOTE: Tablet devices will not charge and sync at the same time.

NOTE: For warranty policy, please refer to the following: www.averusa.com for the Americas and www.aver.com for the rest of the world.



Individual Status Indicators:

When a tablet is placed into any of the TabSync's numbered slots, the corresponding LED status indicator on top of the unit will automatically light up.

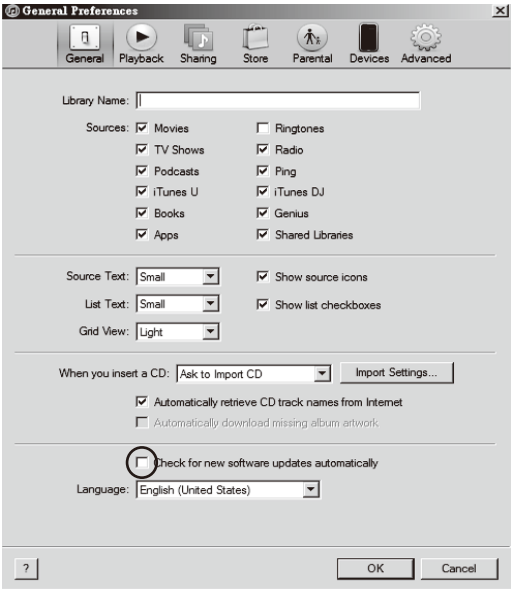
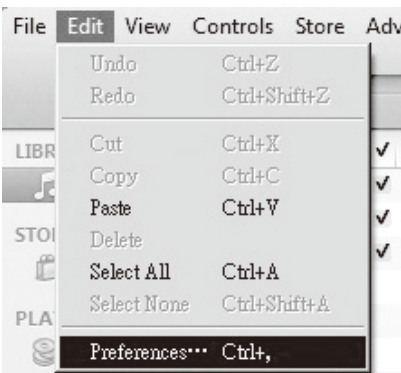
- Green = Fully Charged
- Red = Charging
- Flash Green = Sync in Progress

Note: LED status indicator will flash in sequence from Green-Amber-Red when the power is activated.

iTunes Setup

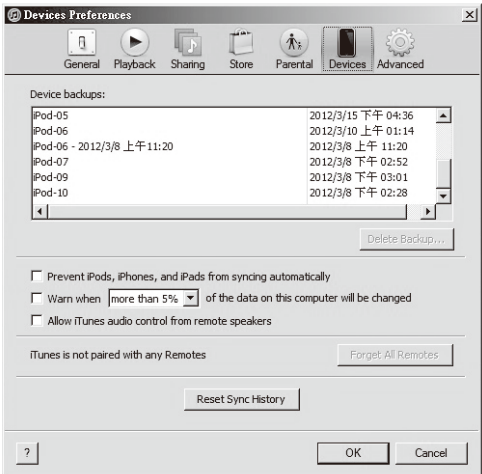
Here are a few settings that should be changed in iTunes to make it work best with the cart and iPads.

- 1.Open the iTunes application on your master laptop. Select Preferences from the Edit menu. On the General pane, uncheck "Check for new software updates automatically". This keeps the automatic update process from interfering with the syncing process. You can still check for iOS updates by manually clicking on the Check for Updates button on the individual iPad screens. For more on iOS updates, see the iOS Update section below.



- 2.Next, click on the Device icon. Make sure none of the options are selected. The screen should look like this when complete. Click OK to save your changes.

- 3.Prepare your iTunes library by downloading the Apps, Books, Music, etc that you intend to copy to your iPads.



iPad Setup

Before starting the syncing process, each individual iPad needs to be configured to work with iTunes and the cart correctly. This can be done by plugging each device into the master syncing laptop one unit at a time, or you can plug one unit in at a time within the cart. To speed up the syncing process when syncing multiple devices, Apple suggests disabling automatic backups. This can be accomplished using Apple Terminal or a third party software.

1. Setup your master laptop on top of the cart. Plug the power cord into the auxiliary outlet and the USB cable into the auxiliary USB plug. Plug the cart power cord into a wall outlet.
2. Select one iPad. We recommend setting your screen brightness at half level or less as the screen does stay on during much of the syncing process. Go to Settings and select Brightness. Click Auto-Brightness so it turns to Off. Slide the brightness slide to the left so it is positioned halfway between dim and bright.

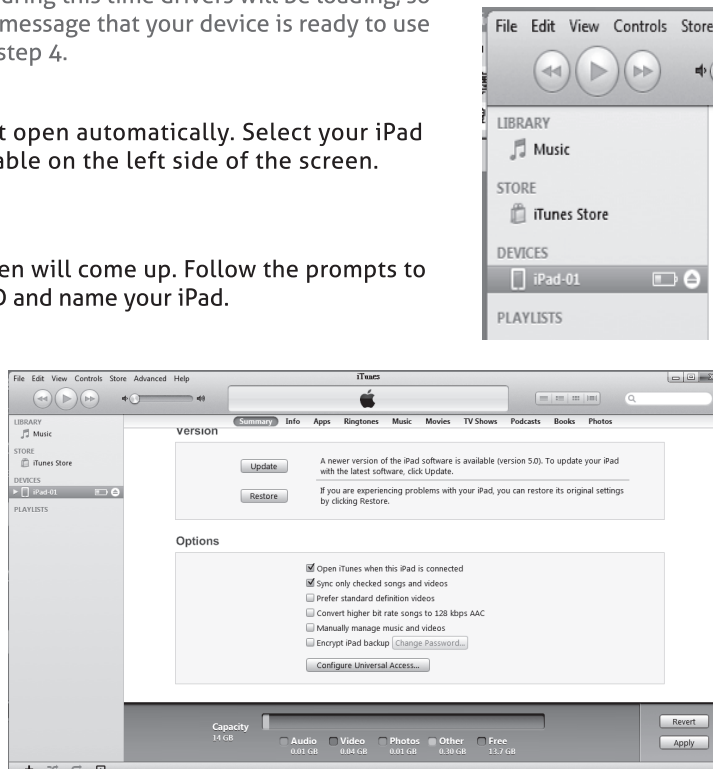
3. Plug iPad into the cart.

NOTE: If connected to a PC, during this time drivers will be loading, so wait until you get the message that your device is ready to use before proceeding to step 4.

4. Open iTunes if it does not open automatically. Select your iPad device from the Device table on the left side of the screen.

5. The iPad registration screen will come up. Follow the prompts to log in or create an Apple ID and name your iPad.

6. Click on the Summary tab. Select "Open iTunes when this iPad is connected" and "Sync only checked songs and videos". Verify "Manually manage music and videos" is not selected (this function would require you to drag and drop your selections to each iPad).



7. Click on each of the tabs at the top (Apps, Music, Movies, TV shows, Books, Photos) and select which type of files you will want to sync on this device. Click the Sync or Apply button.
8. Repeat Steps 2 – 7 with each iPad that will be used in this trolley.

Ready to Sync

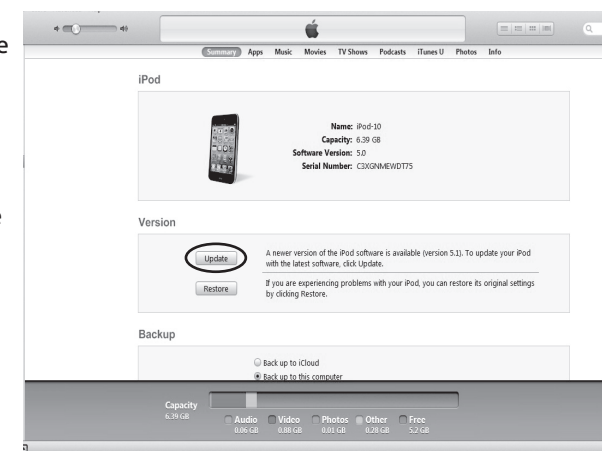
1. When all the iPad devices have been configured, you are ready to charge and sync your tablets. Place each iPad in a slot in the cart. Plug each device in using the 30-pin Apple connector connectors. Plug the cart into a wall outlet.
2. If the iPad devices are new, they should be fully charged before attempting to sync.
3. When ready to sync, connect one end of the USB cable into the USB port near the auxiliary outlet and the other into a USB 2.0 port on your Mac or PC.
4. iTunes will open and syncing will start automatically. Each iPad will be listed in iTunes under the Device list on the left hand side of the screen. You could review the sync status from master PC.

NOTE: Please keep in mind that identifying the devices and syncing will take time, so please be patient. The time is dependent on the number of iPads being synced and the amount of data being transferred. It can range from a few minutes to hours on 32 devices depends on different content. Please do not stop the process once it has been started.

5. When syncing is complete, the Eject symbol will appear next to each device. At this time it is safe to eject the device by clicking on the Eject symbol or closing iTunes.
6. When syncing is complete, unplug the USB Cable from your PC so charging can begin. Charging will not occur while the USB Cable is plugged into the master laptop.

iOS Updates

Due to the functionality of the iTunes software, iOS updates can not be done across the whole fleet of iPads at one time. This will need to be completed one unit at a time. It can still be done with the units plugged into the cart. To update iOS on each iPad, select an iPad from under the Device list on the left side of the screen. Click on the Update button in the middle of the screen. Follow the prompts to complete the update. Updating time will vary depending on the size of the update from Apple. When one unit is complete, the next unit can be selected until all units have been updated.



Cart and Equipment Safety

WARNING :

This cart must only be used for its intended purpose in accordance with these operating instructions. Failure to observe the following notices can result in fire, injury, death by electric shock or equipment damage.



ELECTRIC SHOCK
Operate Carefully

- Do not unplug this cart from the outlet when your hands are wet.
- Do not use cables that are damaged.
- Do not unplug by pulling on the cable.
- Do not plug the cable into an extension cable.
- Before moving the cart, make sure the power cord is wrapped and secured within the cord wrap compartment.



- This cart should only be moved or operated by an adult.
- Do not allow anyone to sit, stand, or climb on the cart.
- Move the cart slowly.
- Keep the caster locked when the cart is not in transit.
- Keep the cart away from water.
- Keep the ventilation holes unblocked for air circulation.
- Do not block the ventilation holes when charging.
- To prevent muscle strain, please push rather than pull on the handles when moving the cart.
- Do not use TV or monitor on top of cart.
- Do not store or place liquids on top or within the cart.