
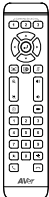
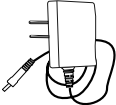
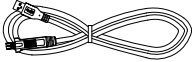
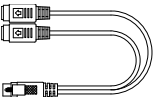
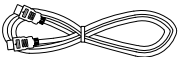


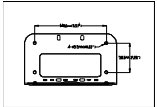





CAM520 Pro Camera

Quick Installation Guide

Package Contents

Camera unit (Basic/Advanced model*)	Remote controller	Power Adapter Power plug	USB 3.0 Cable	
				
RS232 cable** (DIN 9 to DIN8)	HDMI cable**	L-Mount Bracket	Screws for mount	Drilling paper
				
Quick Guide	Warranty card	AAA Batteries		
				

* Advanced model supports HDMI port, DIP switch, and PoE+ function.

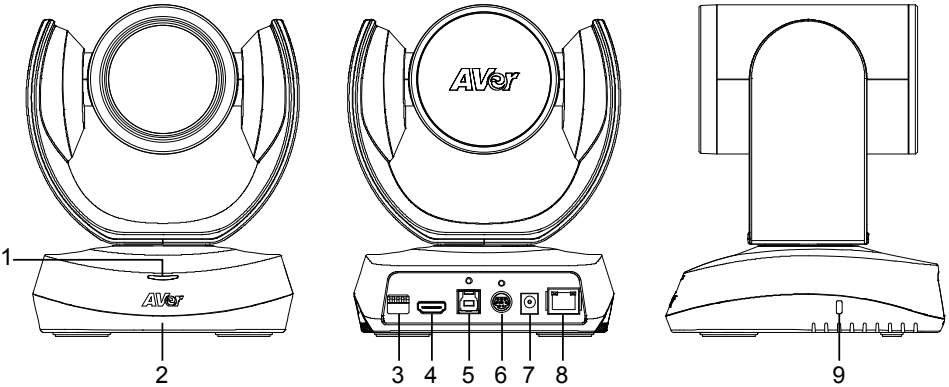
** Only support for advanced model.

More Help

For FAQs, technical support, software and user manual download, please visit:

<http://www.averusa.com>

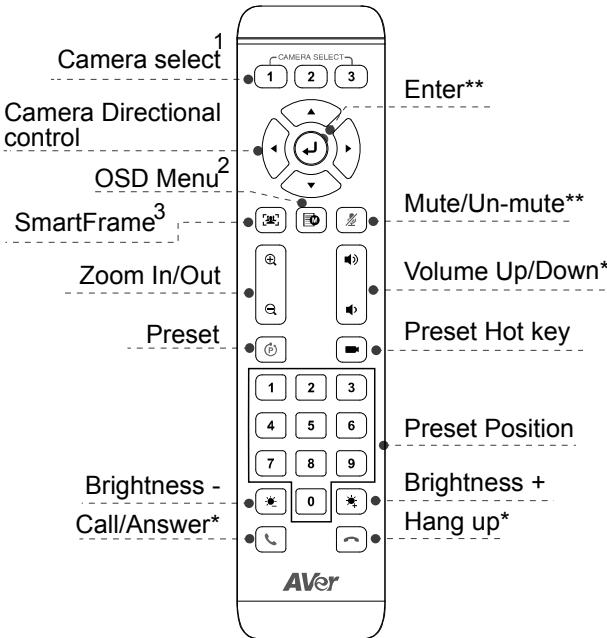
Overview



- | | | | | | |
|---|-------------------------|---|------------------------|---|----------------------------|
| 1 | Status LED | 4 | HDMI port ¹ | 7 | DC 12V power plug |
| 2 | IR sensor | 5 | USB3.1 Type B port | 8 | Ethernet port ² |
| 3 | DIP switch ¹ | 6 | RS232 in/out port | 9 | Kensington Lock |

- 1: Only support for advanced model.
- 2: Advanced mode supports PoE+.

Remote Controller

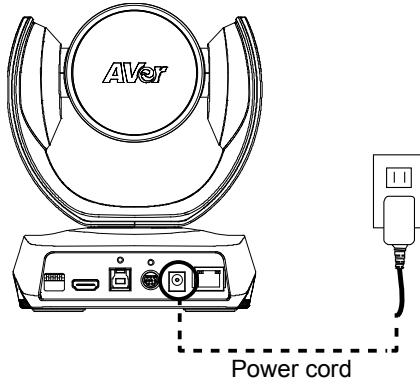


*Function requires AVer PTZApp
 **Not support for CAM520 Pro

- 1: If you only have one camera and don't need to do any setting, the default is camera 1. If you press camera 2 or 3 on the remote control, you will find your remote can't control your camera. In this case, please press camera 1 on your remote again.
- 2: Only available for advanced model.
- 3: Press for 1 second can switch the SmartFrame function between auto and manual
- Press and hold the number button " 1 " can turn on or off the WDR function.
- AAA Batteries (required)

Installation

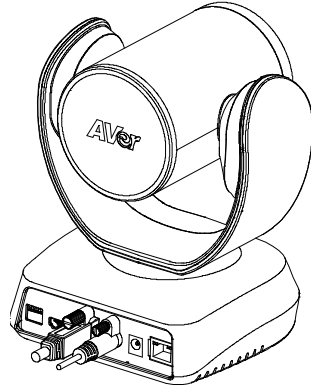
1. Connect the camera to power outlet.



2. Connect the necessary cables.

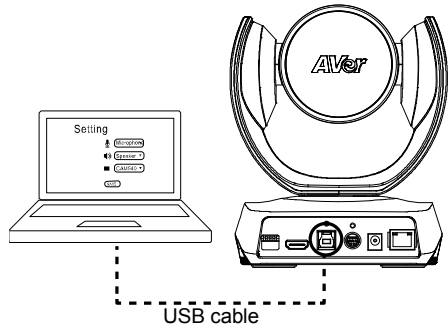
[Note]

- USB and RS232 cable need to secure the cable with attached screw.
- Make sure the cable is well connected to the connector on the camera before securing the cable.



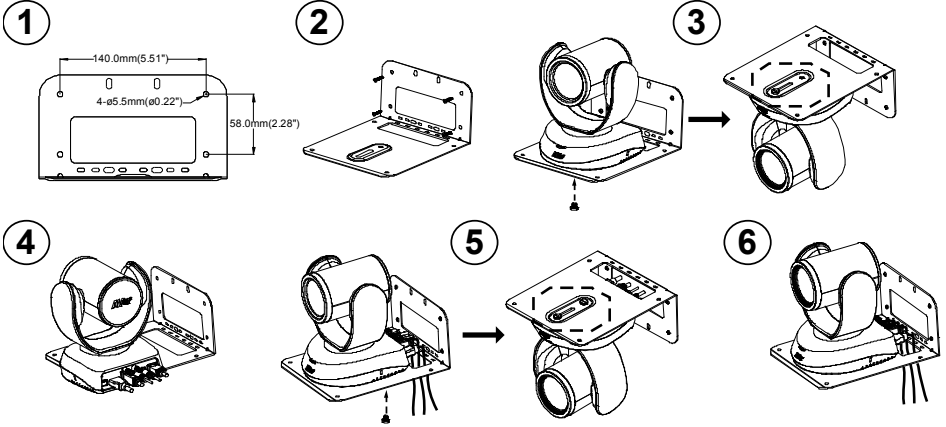
3. Connect the camera to the computer.

[Note] Use the USB 3.0 cable that is included in package.



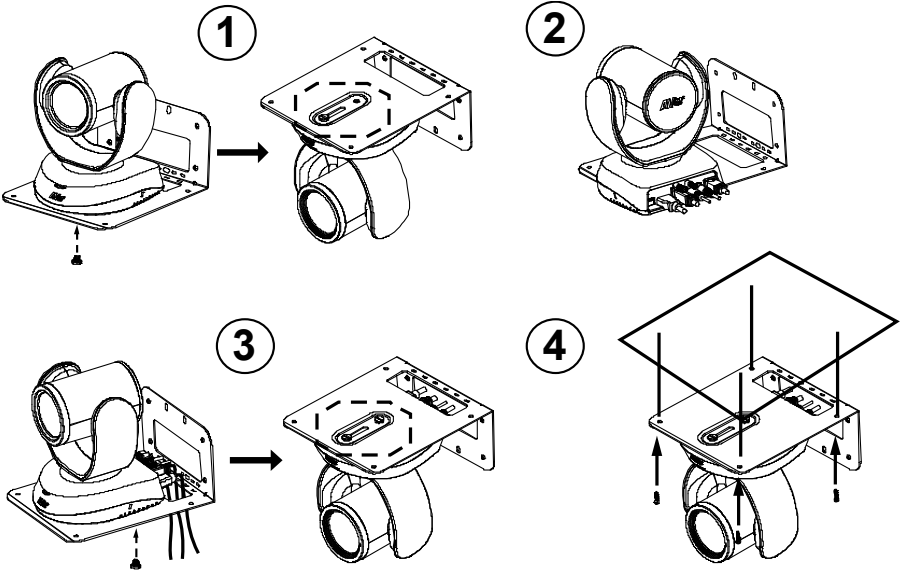
Wall Mount Installation

[Note] 1. In step 3, do not tight the screw when secure the camera on the wall mount bracket.
2. In step 5, secure tight the both screws to secure the camera on the wall mount bracket.



Ceiling Mount

[Note] 1. In step 3, do not tight the screw when secure the camera on the wall mount bracket.
2. In step 5, secure tight the both screws to secure the camera on the wall mount bracket.



Making a Video Call

A computer is required to use this device.

Step 1: Open your video collaboration application such as Zoom, Microsoft® Teams, Skype for Business, Skype, Google Hangouts, Intel® Unite™, RingCentral, BlueJeans, V-Cube, LiveOn, CyberLink U Meeting®, TrueConf, Adobe Connect, Cisco WebEx®, Fuze, GoToMeeting™, Microsoft® Lync™, Vido, vMix, WebRTC, Wirecast, XSplit.

Step 2: Set the CAM520 Pro as your primary camera device in your application (Please consult your application setup guide for details).

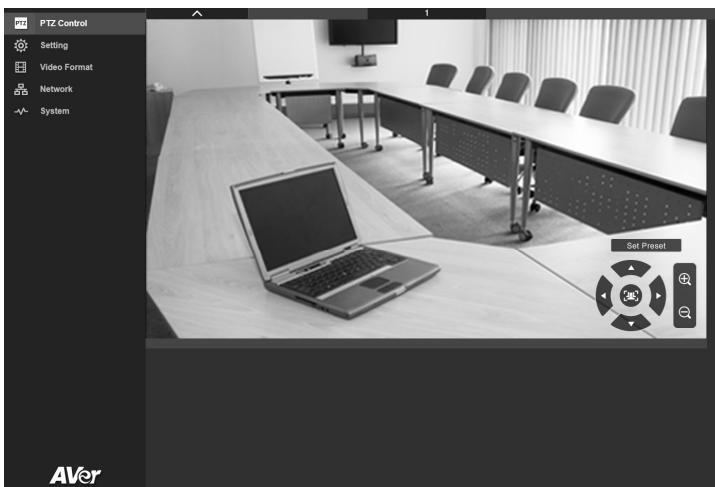
Step 3: Ready to make a video call.

[Note] CAM520 Pro is a Plug-n-Play Conference Camera. The system requires no special drivers. For advanced setting and firmware update, please download **AVer PTZApp**.

Setup the Camera through the Web Browser

CAM520 Pro has an Ethernet port for IP streaming and allows administrators to remotely control and set up the camera via an internet access. Moreover, CAM520 Pro also supports RTSP and RTMP functions. For more details, please refer to user's manual or contact our technical support.

1. Make sure the CAM520 Pro has an internet access connection.
2. Open the browser and enter the IP address of the camera.
3. The camera default IP address is **192.168.1.168**. User can use "**AVer IP Finder**" app to find the camera (Please refer to "**Using AVer IP Finder to Find the Camera**" section).
4. When login screen is shown, enter the password (default password is **aver4321**).
5. The web main screen is displayed.



Using AVer IP Finder to find the Camera

To find the IP address of your cameras, you can use the AVer IP Finder application. Follow the below steps to find the IP address of camera.

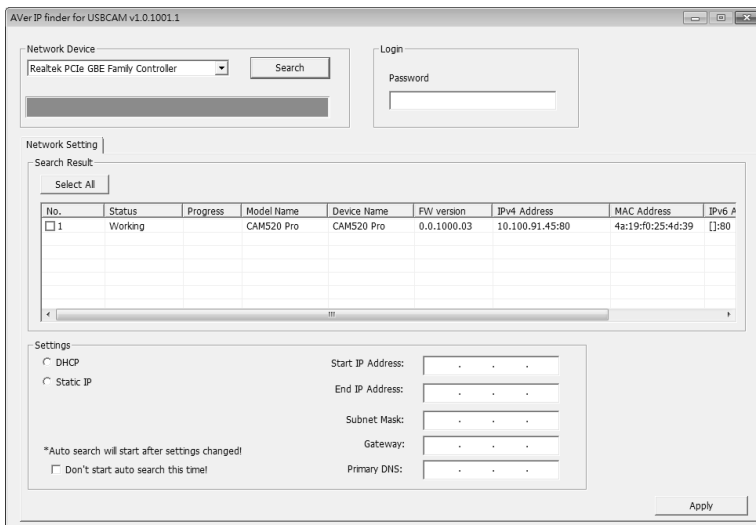
1. Download the IP Finder from <http://www.aver.com/download-center> .
2. Run the IP Finder.
3. Click “**Search**”, and all available devices will be listed on the screen.
4. Select a camera from the list. The corresponding fields of IP address will display.
5. To change the IP address of camera, user can select “DHCP” or “Static IP”.

The DHCP should get the IP address from local dynamic IP sever. The static IP, user can enter the specific IP address. Click “**Apply**” to apply the setting to the camera. The login password is required(default password is **aver4321**).

6. Click “**Search**” button to re-scan the camera.
7. Double-click on the IP address of camera from the list can connect to camera through the browser.

[Note] If IP Finder cannot find the camera, please check following:

- Please make sure the Ethernet connection of camera is well connected.
- The camera and PC (IP Finder) are in the same LAN segment.




Install AVer PTZApp

In AVer PTZApp, user can configure the parameters of the camera.

Please go to <http://www.aver.com/download-center> to download the AVer PTZApp. After downloading, double-click on the file and follow the on-screen instructions to complete the installation.

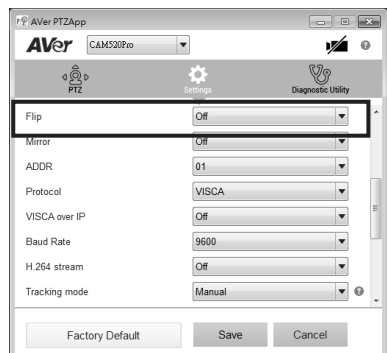
Use AVer PTZApp

1. After installing the AVer PTZApp, double-click on the AVer PTZApp icon to run the application.
2. During your video call, you can use the AVer PTZApp to pan, tilt and zoom the camera in/out and enable/disable the backlight feature, set up camera Home or Sleep mode preset points. For more details, please refer to the user manual.
3. **Tracking mode:** It is SmartFrame function which can auto detect faces of people to find the best view for all meeting participants. Users can change SmartFrame function status in AVer PTZApp. In AVer PTZApp, select **"Settings"** > **"Tracking mode"** > **"Auto frame/Manual frame/off"**.

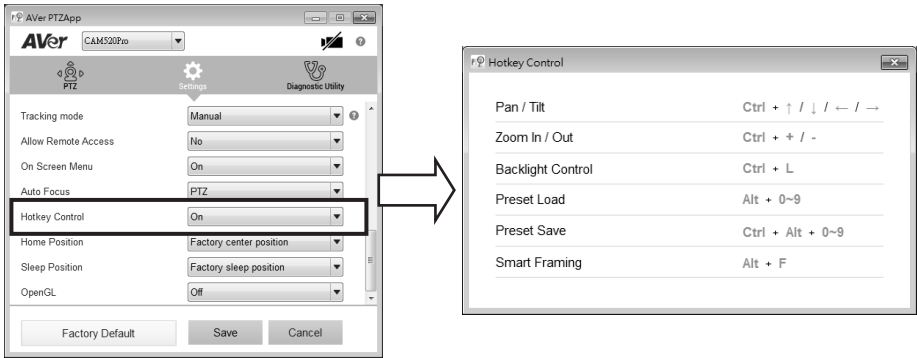
Also, pressing  on the remote for 1 second can switch the SmartFrame function between auto and manual; a message (as figure shown) will display on the screen to indicate in auto or manual status.

[Note] While in conferencing meeting, participants must face the camera for face detection (SmartFrame).

4. **Flip:** If the camera is installed in the upside down position, please enable the **"Flip"** function in the AVer PTZApp, and the screen will display normally.

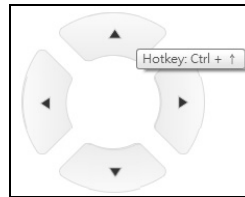


5. **Hotkey Control:** Enable hotkey control to use keyboard control camera's movement and backlight. The default is off.



A hotkey tip will display when mouse is moved to the PTZ control button in PTZ mode.

If the hotkey function is enabled after installed PTZApp, PTZApp auto launch next time while PC reboot. Therefore, the customer can use all the hotkey commands since PTZApp is auto running in system tray.



Contact Information

AVer Information Inc.

668 Mission Ct

Fremont, CA 94539

www.averusa.com

Toll-free: 1(877)528-7824

Local: 1(408)263-3828

support.usa@aver.com

Federal Communication Commission Interference Statement

NOTE: This equipment has been tested and found to comply with the limits for a Class A digital device, pursuant to part 15 of the FCC Rules. These limits are designed to provide reasonable protection against harmful interference when the equipment is operated in a commercial environment. This equipment generates, uses, and can radiate radiofrequency energy and, if not installed and used in accordance with the instruction manual, may cause harmful interference to radio communications. Operation of this equipment in a residential area is likely to cause harmful interference in which case the user will be required to correct the interference at his own expense.

FCC Caution: Any changes or modifications not expressly approved by the party responsible for compliance could void the user's authority to operate this equipment.

This device complies with part 15 of the FCC Rules.

Operation is subject to the following two conditions:

- (1) This device may not cause harmful interference, and
- (2) this device must accept any interference received, including interference that may cause undesired operation.

Warning:

This is a class A product. In a domestic environment this product may cause radio interference in which case the user may be required to take adequate measures.

CAUTION

- Risk of explosion if battery is replaced by an incorrect type.
- Dispose of used batteries in a safe and proper manner.