

TR530

30X Auto Tracking Distance Learning Camera



Distance Learning Ready

3G-SDI IP/HDMI Connectivity

3 Auto Tracking Modes

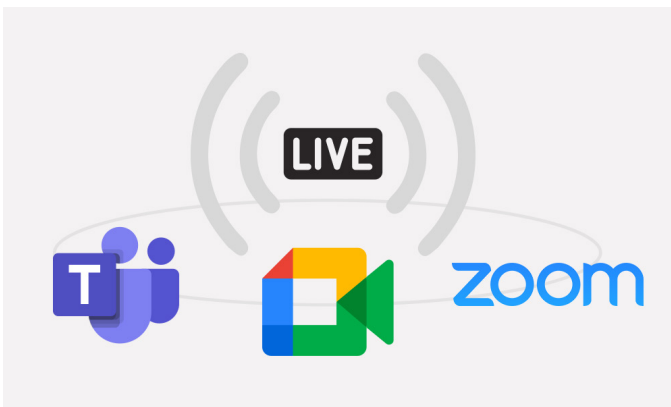
30X Optical Zoom

3Yr Warranty



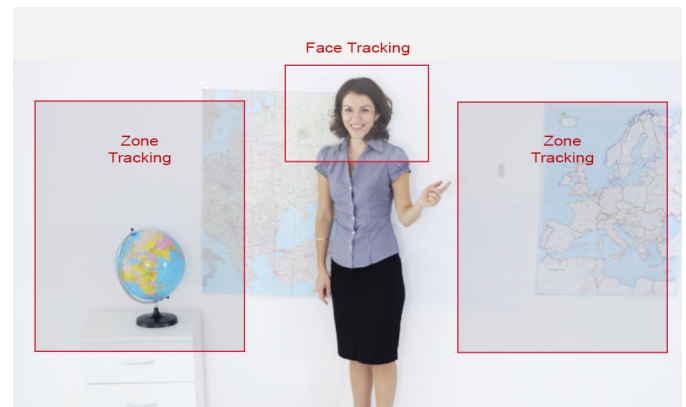
Give your remote students the feel of being in class

The AVer TR530 Auto Tracking Distance Learning Camera brings a true in-class experience for remote students while making it easy for educators and IT staff to use. The TR530 uses advanced technology to offer three auto tracking modes while a second panoramic camera provides a static 120° field of view to effectively track your teacher or presenter without a camera operator. The 30X optical zoom and full HD 1080p60 video resolution capture every little detail.



Distance Learning Ready

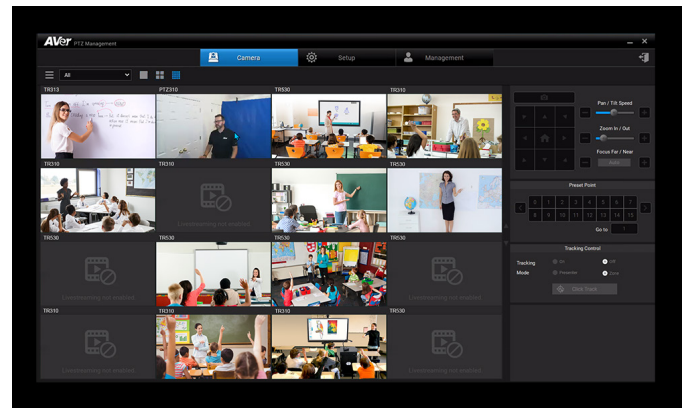
The TR530 is fully compatible with all popular video conferencing platforms such as Zoom, Google Meet, Google Hangouts and Microsoft Teams to connect and stream professional quality videos or record and save your lessons for later reference*.



Three Auto Tracking Modes

The TR530 features three auto tracking modes to ensure your teacher or presenter always remains in view. Wide Area Tracking follows the teacher throughout the room so presenters can interact with students, and use other classroom technology or demonstrations in the room. Stage Tracking allows for tracking of presenter in extremely challenging conditions such as low lighting or camera that had to be installed very far from the presenter. Segment Tracking allows for particular areas or stations to automatically be set such as an IFP, dry erase board, or document camera station.

* with a compatible HDMI or SDI to USB converter



Crystal Clear In-Class Experience

The 2MP camera and 30X optical zoom outputs video with 1080p at 60 fps to give you all you need to share crystal clear, smooth content to your remote students. Capture content with brilliant clarity to share the fine details on a whiteboard for a true classroom experience no matter where your students are learning.

Free Software

AVer's Windows based PTZ Management software allows administrators to manage up to 128 cameras per console, provide firmware updates and even utilize PTZ controls.

Specifications

Camera					
Image Sensor	1/2.8" 60fps low lux CMOS	Pixel	2MP	Electronic Shutter	1/5 s to 1/32,000 s
Output Resolution	Resolution : 1080p/720p Frame Rate : 60/59.94/50/30/29.97/25			Focal Length	f = 4.3mm(Wide)~129mm (Tele)
Iris	F = 1.6(Wide)~4.7 (Tele)	Optical Zoom	30X	Digital Zoom	12X
Total Zoom	360X	Noise Reduction	Off/Low/Medium/High	Frequency	Auto/50Hz/60Hz
View of Angle	DFOV = 76°(Wide)~5° (Tele)	Minium Illumination	IRE50:0.47 lux (60fps) ; 0.23 lux (30fps)	Minimum Working Distance	1.2m at Tele-End (30X) ; 0.1m at Wide-End (1X)
Preset Number	10(IR remote), 255(RS232)	White Balance	Auto/Manual (2500-10000)	Gain	Auto/Manual
Horizontal Resolution	Center: 800 TV Lines; Corner: 600 TV Lines	BLC(Back Light Compensation)	Off/On	Exposure	Auto/Shutter Priority/ IRIS Priority/Manual
S/N Ratio	>50dB				
Parameter					
Pan Angle	-175°(Left) +175°(Right)	Tilt Angle	-30°(Down) +90°(Up)	Pan Control Speed	2°~50°/Sec
Tilt Control Speed	2°~50°/Sec	Preset Speed	Pan: 160°/Sec, Tilt: 160°/Sec		
Panoramic Camera (Full View)					
Image Sensor	1/2.8" 60fps low lux CMOS	Pixel	2MP	Focal Length	2.12mm
Output Resolution	Auto, 1080p/60, 1080p/30, 720p/60	White Balance	Auto	Exposure	Auto
FOV	DFOV=120°, HFOV=110°, VFOV = 74.5°				
	Interface/Streaming/Protocol				
Video Output	3G-SDI*2, HDMI*1, IP(RJ45)	Video Output Capability	Up to 1080p/60	Network Protocol	RTSP, RTMP, ONVIF
Remote Control	RS232 (via optional DB9 to DIN6 adapter), IP (RJ45)			Network Video Compress Format	H.264
Baud Rate	115200/9600/4800/ 2400bps	Network Interface	10/100/1000Base-T, support Wake-on-LAN	Control Protocol	VISCA/Pelco-D/Pelco-P
IP Video Streaming	Dual video streaming (PTZ and panoramic view)	Power	DC12V, Power adapter		

System					
Remote IR	IR sensor	Audio	PCM, AAC-LC, G.711	Application	Indoor
Security	Kensington slot	Infrared Remote	Receiver on front of camera	Operation Humidity	20%~80%
Power Adapter	AC110V-AC220V to DC12V/5A	Consumption	24 W(Max)	Operating Temperature	0°C~+40°C
Operating Humidity	20%~80%	Storage Temperature	-20°C~+60°C	Storage Humidity	20%~95%
Dimensions	L = 201mm, W = 210mm, H = 176mm	Weight	1.75kg	LED	Power (Blue-open, Red-close)
Accessory	Remote control, 12V/5A power adapter, DB9 to DIN6 adapter, user manual	Optional Accessory	Camera mount(Wall & Ceiling) Part #: PTMLTWC01 Camera Mount(L-Type for Wall) Part#: COMSVCMT HDMI to USB Converter Part #: TCVBU110 SDI to USB Converter Part #: PTCVBU111		
Software Tools	AVer PTZ Manager (coming soon)				
Warranty					
Camera	3 Years with AVerCare	Accessories	1 Year		
Ordering info					
Part number	PAVPTR530				

Front



Back



AVer Information Inc. Americas averusa.com. 668 Mission Court, Fremont, CA 94539

T:408.263.3828 F:408.263.8132 Toll free:1.877.528.7824

©Copyright 2020, AVer Information Inc. All rights reserved. Specifications subject to change without notice.

Zoom, Google Hangouts, Google Meet and Microsoft Teams are trademarks of their respective owners.