



# PTZ330UNV2

30X 4K AI NDI PTZ Camera

NDI<sup>®</sup> | HX3

SRT  
READY

zoom  
Certified



# Capture Your Events With the Best Quality Video and the World's First UHD NDI HX3 Camera with AI!

The AVer PTZ330UNV2 30X 4K AI NDI PTZ Camera is our latest generation of PTZs to offer the best image quality, video streaming support and AI functionality. The camera offers 4K resolution, 8MP picture with 60fps and simultaneous output of HDMI/IP/NDI HX3/3G-SDI. The PTZ330UNV2 is the world's first UHD NDI HX3 camera for better video with reduced latency – using a fraction of the bandwidth of NDI® high bandwidth. The PTZ310UNV2 features Zoom and Microsoft Teams video mode for easy conference setups and the SRT protocol to optimize video streaming performance across unpredictable networks. Built-in AI functions provide preset content areas or adjust FOV to capture everyone on screen.



4K Resolution



30X Optical Zoom



HDMI, IP, NDI HX3,  
USB, 3G-SDI



Supports PoE+



8MP Picture



AI Functions



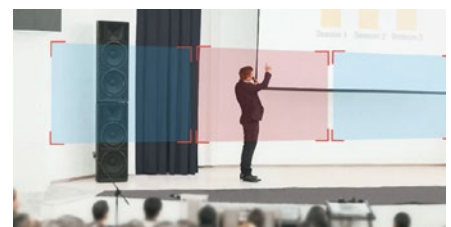
## 4Kp60

- Simultaneous output at 4Kp60 with HDMI/NDI/IP



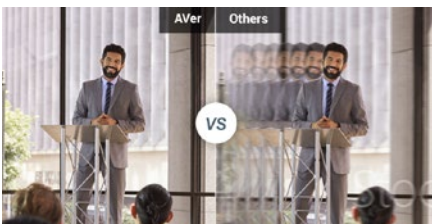
## Harness the Magic of NDI/HX3

- Includes the most recent edition of the NDI protocol is NDI® version 3 (NDI® HX3)
- Features 4Kp60 NDI output with latency less than 100ms



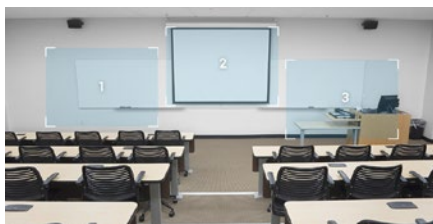
## Seamless Content Capture with SmartShoot AI Functions

- Optimize your camera controls for automatic content capturing between preset areas
- Create a multi-camera feel across all your preset zones
- Save time and effort with a variety of shooting ranges



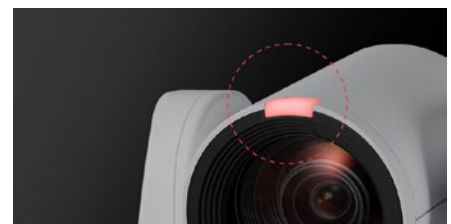
## Advanced Motion Control

- Achieve precise camera movement during recording
- Pan/tilt rotation maneuvers as small as 0.1° per step and as fast as 200°
- Customizable speed controls allow you to optimize your recording



## Prepare for Any Angle

- Up to 256 different preset locations through VISCA via RS232 and RS422 functionality
- Simplified IR remote and the ability to set 10 preprogrammed preset locations
- Easy manual control of the recording view with outstanding preset locations



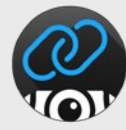
## Tally Light

Simplify multi-camera live video productions with an illuminated red light on the active camera.



## Free Software for Users and AV Managers

Whether you need a simple tool to control your PTZ or TR camera, or manage over a hundred on your network, AVer has great options. [CaptureShare](#) and [PTZ Management](#) for desktop and [AVer PTZ Control Panel](#) for iPad have you covered. For new voice tracking features, look to [PTZ Link](#). Visit our [support page](#) for easy download of our desktop software.



## Compatible Software



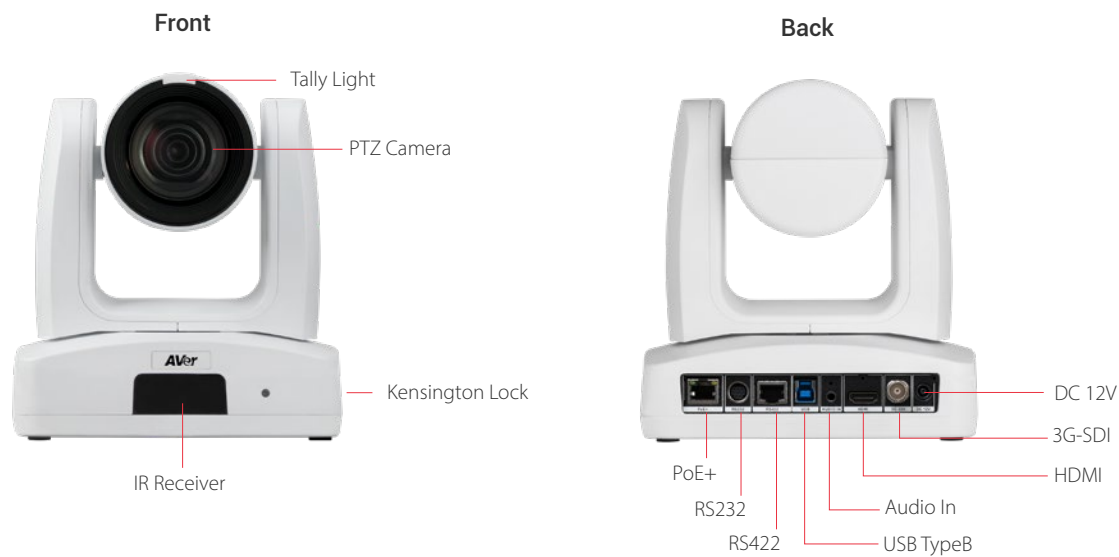
## Product Specifications

### PTZ310UNV2

Camera	Image Sensor	1/2.8" 4K Exmor CMOS
	Effective Picture Elements	8 Megapixels
	Output Resolutions	4K/60, 4K/59.94, 4K/50, 4K/30, 4K/29.97, 4K/25, 1080p/60, 1080p/59.94, 1080p/50, 1080p/30, 1080p/29.97, 1080p/25, 1080i/60, 1080i/59.94, 1080i/50, 720p/60, 720p/59.94, 720p/50
	Minimum Illumination	0.46 lux (IRE50, F1.6, 30fps)
	S/N Ratio	> 50dB
	Gain	Auto / Manual
	TV Lines	1400 (Center/Wide)
	Shutter Speed	1/1 to 1/32,000 sec
	Exposure Control	Auto, Manual, Priority AE( Shutter, IRIS), BLC, WDR
	White Balance	Auto, Manual, ATW, One Push
	Optical Zoom	30X
	Digital Zoom	1X
	Total Zoom	30X
	Viewing Angles	DFOV : 69.2° (Wide) to 2.8° (Tele), HFOV : 62.3° (Wide) to 2.5° (Tele), VFOV : 37.3° (Wide) to 1.4° (Tele)
	Focal Length	f = 4.5 mm (Wide) to 135 mm (Tele)
	Aperture (Iris)	F = 1.8 (Wide) to 4.7 (Tele)
	Minimum Working Distance	0.1 m (Wide), 1.2 m (Tele)
	Pan / Tilt Angles	Pan : ±170°, Tilt : +90° / -30°
	Pan / Tilt Speed (Manual)	Pan : 0.1° to 100° / sec, Tilt : 0.1° to 100° / sec
	Preset Speed	Pan : 200° / sec, Tilt : 200° / sec
	Preset Positions	10 (IR), 256 (RS-232, RS-422, IP)
	Camera Control - Interfaces	RS-232 (DIN8), RS-422 (RJ45), IP
	Camera Control - Protocols	VISCA (RS-232 / RS-422 / IP), PELCO-D & PELCO-P (RS-232 / RS-422), CGI (IP)
AI Functions	Image Processing	Noise Reduction (2D / 3D), Flip, Mirror
	Power Frequencies	50 Hz, 60 Hz
	Modes	SmartShoot
Audio	Audio - Channel	2ch Stereo
	Audio - Codec	AAC-LC
Interface	Video Outputs	3G-SDI, HDMI, IP, USB
	Audio Outputs	3G-SDI, HDMI, IP, USB
	Audio Input	MIC in, Line in
General	Power Requirement	AC 100 - 240V to DC 12V/2A
	Power Consumption	19W
	PoE	PoE+
	Dimensions (W x H x D)	180.0 x 192.0 x 145.0 mm
	Net Weight	2.0 (±0.1) kg
	Application	Indoor
	Tally Light	Yes
	Security	Kensington Slot
	Remote Control	Infrared
	Operating Conditions	Temperature : 0 °C to +40 °C ; Humidity : 20% to 80%
	Storage Conditions	Temperature : -20 °C to +60 °C ; Humidity: 20% to 95%
IP Streaming	Resolution	4K 60fps
	Network Video Compress Formats	H.264, H.265, MJPEG
	Maximum Frame Rate	4K 60fps
	Bit-Rate Control Modes	VBR, CBR (selectable)
	Range of Bit-Rate Setting	512 Kbps to 120 Mbps
	Network Interface	10 / 100 / 1000 Base-T
	Multi-Stream Capability	5: HDMI / RTSP / NDI HX2 / USB(4Kp60) & 3G-SDI(1080P60) or 4: HDMI / RTSP / NDI HX3(4Kp60) & 3G-SDI(1080P60)
	Network Protocols	IPv4, TCP, UDP, ARP, ICMP, IGMP, HTTP, HTTPS, DHCP, RTP / RTCP, RTSP, RTMP, SRT, HLS, NDI, LLDP, VISCA over IP
	NDI®HX3 Capability	Yes
	NDI® Genlock Capability*	Yes
USB	Connector	USB 3.0 Type-B
	Video Formats	MJPEG, YUY2
	Maximum Video Resolution	2160p
	USB Video Class (UVC)	UVC 1.1
	USB Audio Class (UAC)	UAC 1.0
Web UI	Live Video Preview	Yes
	Camera PTZ Control	Pan, Tilt, Zoom, Focus, Preset Control
	Camera / Image Adjustment	Exposure, White Balance
	Network Configuration	DHCP, IP Address, Gateway, Subnet Mask, DNS

<b>Software Tools</b>	IP Search and Configuration Tool	Support Windows® 7 or later
	PTZ Management	Support Windows® 7 or later
	PTZ Control Panel	Supports iOS & iPadOS® 11 or later
	PTZ Link	Supports Windows® 7 or later, macOS® 10.14 or later
	OBS Plugin for PTZ Cameras	Supports Windows® 8 or later, macOS® High Sierra v10.13 or later
	CaptureShare	Supports Windows® 7 or later, macOS® 10.14 or later
<b>Warranty</b>	Camera	5 Years
	Accessories	1 Year
<b>Package Contents</b>	Camera, Drilling Paper, Ceiling Mount Bracket (x2), Quick Start Guide, Cable Fixing Plate, M2 x 4 mm Screw (x3), Power Adapter & Power Cord, 1/4"-20 L=6.5 mm Screw (x2), Remote Control, M3 x 6 mm Screw (x3), DIN 8 to D-Sub 9 Cable, RS-232 In/Out Y Cable, Cable Ties (x4)	
<b>Optional Accessories</b>	AVer CL01 PTZ Camera Controller, L-Type Ceiling Mount	
<b>Ordering Info</b>	Part Number	PT330UNV2

Hardware Specifications



AVer Information Inc. Americas  
44061 Nobel Drive, Fremont, CA 94538  
Toll free 1.877.528.7824 T 408.263.3828 F 408.263.8132

©2023 AVer Information Inc. All rights reserved.  
All brands and logos are trademarks of their respective companies. Specifications subject to change without notice.

pro.averusa.com