



TR320

Dual Lens
22X Auto Tracking Camera

Professional Broadcasting Made Easy

The TR320 is the easy and affordable solution for any amateur to produce professional results. Record or stream speeches, lectures, higher education courses, and essential employee training in HD 1080p video quality without a professional videographer. The TR320 offers cutting edge adaptive target tracking with a powerful PTZ camera, 22X optical zoom, and a secondary 120° POV panoramic camera to meet the needs of educational organizations, governmental institutions, houses of worship and enterprises.



3 Auto Tracking Modes



22X Optical Zoom Camera



120° FOV



HDMI/IP/3G-SDI Output



3-Year Warranty



IP Streaming

3 Auto Tracking Modes provide the ultimate flexibility to capture your target

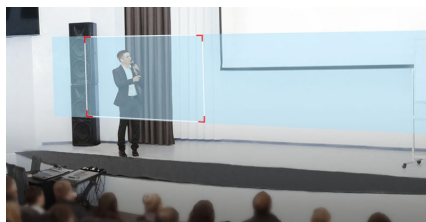
Wide Area Tracking

- Track your target everywhere
- Presenters are continuously tracked, even off-stage
- Target will be tracked even if he/she is obscured by others



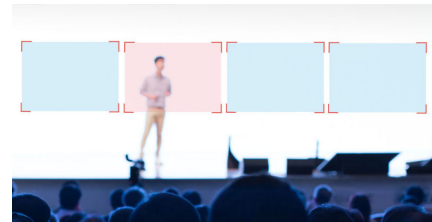
Stage Tracking

- Hands-free video streaming and recording
- Fluidly track your target with Effective Zone settings
- Up to 8 blocking zones to capture professional video



Segment Tracking

- Enhance the capture of content on multiple displays
- Create 4 Content Zones for immediate recognition and tracking
- Perfectly capture the content on display rather than your presenter



Compatible Software



Product Specifications

| | | |
|-------------------------------------|-------------------------------|---|
| PTZ Camera | Image Sensor | 1/2.8" 60fps low lux CMOS sensor |
| | Effective Picture Elements | 2 megapixels |
| | Output Resolution | Auto, 1080p/60, 1080p/50, 1080i/60, 1080i/50, 1080p/30, 720p/60 |
| | Optical Zoom | 22X |
| | Digital Zoom | 12X |
| | Lens Focal Length | f = 4.3mm (Wide) ~ 94.6mm (Tele) |
| | Iris | F = 1.6 (Wide) ~ 4.3 (Tele) |
| | View of Angle | DFOV = 76° (Wide) ~ 5° (Tele) |
| | Minimum Illumination | IRE50:0.47 lux (60fps) ; 0.23 lux (30fps) |
| | Preset Number | 10 (IR remote), 255 (RS232) |
| | Minimum Working Distance | 1.2m at Tele-End (30X) ; 0.1m at Wide-End (1X) |
| | White Balance | Auto / Manual (2500 - 10000) |
| | Gain | Auto / Manual |
| | Electronic Shutter | 1/5 s to 1/32,000 s |
| | BLC (Back Light Compensation) | Off / On |
| | Exposure | Auto / Shutter Priority / IRIS Priority / Manual |
| | Noise Reduction | Off / Low / Medium / High |
| | Frequency | Auto / 50Hz / 60Hz |
| | S/N Ratio | > 50db |
| | Horizontal Resolution | Center : 800 TV Lines ; Corner : 600 TV Lines |
| Pan Tilt Parameter | Pan Rotation | -175° (Left) +175° (Right) |
| | Tilt Rotation | -30° (Down) +90° (Up) |
| | Pan Control Speed | 2° ~ 50°/Sec |
| | Tilt Control Speed | 2° ~ 50°/Sec |
| | Preset Speed | Pan : 160°/Sec, Tilt : 160°/Sec |
| Panoramic Camera (Full View) | Image Sensor | 1/2.8" 60fps low lux CMOS sensor |
| | Effective Picture Elements | 2 megapixels |
| | Output Resolution | Auto, 1080p/60, 1080p/30, 720p/60 |
| | Lens Focal Length | 2.12mm |
| | White Balance | Auto |
| | Exposure | Auto |
| | FOV | DFOV = 120°, HFOV = 110°, VFOV = 74.5° |

| | | |
|---|-------------------------------|--|
| Interface / Streaming / Protocol | Video Output | 3G-SDI*2, HDMI*1, IP (RJ45) |
| | Video Output Capability | up to 1080p/60 |
| | Remote Control | RS232 (via optional DB9 to DIN6 adapter), IP (RJ45) |
| | Baud Rate | 115200 / 9600 / 4800 / 2400 bps |
| | Network Interface | 10 / 100 / 1000Base-T, support Wake-on-LAN |
| | Network Video Compress Format | H.264 |
| | Network Protocol | RTSP, RTMP, ONVIF |
| | IP Video Streaming | Dual video streaming (PTZ and panoramic view) |
| | Control Protocol | VISCA / Pelco-D / Pelco-P |
| | Power | DC12V, power adapter |
| System | Remote IR | IR sensor |
| | Audio | PCM, AAC-LC, G.711 |
| | LED | Power (Blue-open, Red-close) |
| | Security | Kensington slot |
| | Infrared Remote | Receiver on front of camera |
| | Power Adapter | AC110V-AC220V to DC12V/5A |
| | Consumption | 24 W (Max) |
| | Operating Temperature | 0°C ~ +40°C |
| | Operation Humidity | 20% ~ 80% |
| | Storage Temperature | -20°C ~ +60°C |
| | Storage Humidity | 20% ~ 95% |
| | Dimensions | L = 201mm, W = 210mm, H = 176mm |
| | Weight | 1.75kg |
| | Application | Indoor |
| | Accessory | Remote control, 12V/5A power adapter, DB9 to DIN6 adapter, user manual |
| | Software Tools | AVer PTZ Management |
| Warranty | Camera | 3 Years with AVerCare |
| | Accessories | 1 Year |
| Ordering Info | Part Number | PAVPTR320 |

Hardware Specifications



AVer Information Inc. Americas
 668 Mission Court, Fremont, CA 94539
 Toll free 1.877.528.7824 T 408.263.3828 F 408.263.8132

©2019 AVer Information Inc. All rights reserved.
 All brands and logos are trademarks of their respective companies. Specifications subject to change without notice

pro.averusa.com