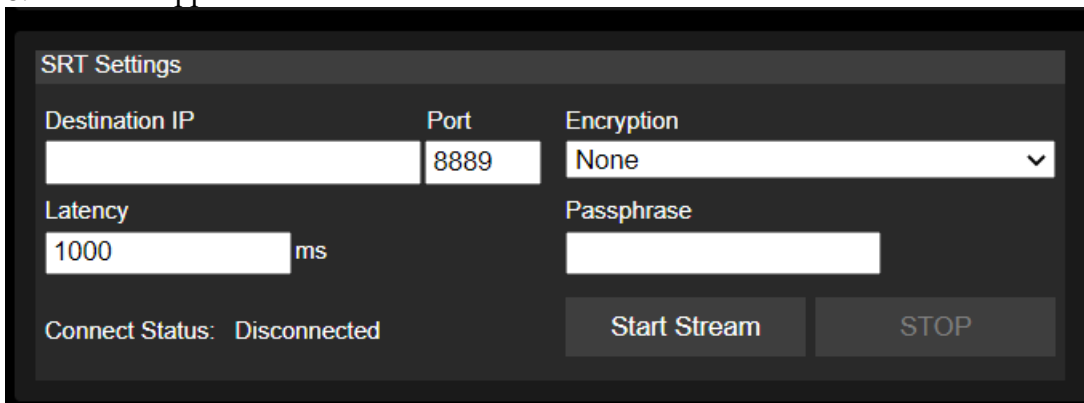


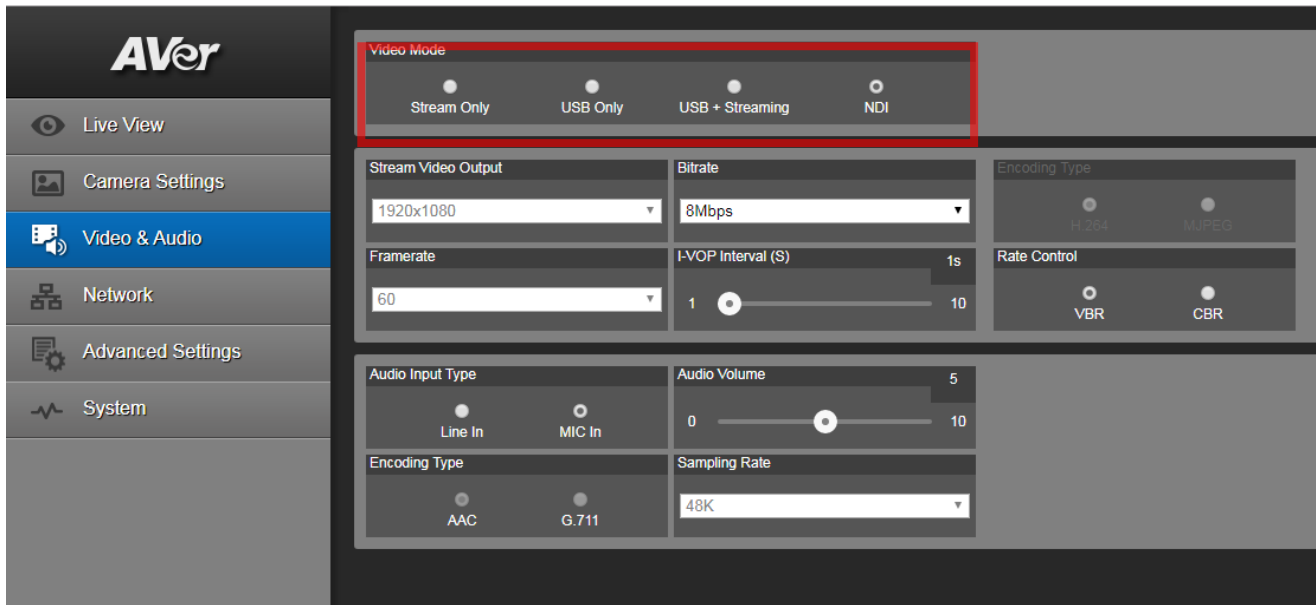
Products: PTZ310/PTZ310N/PTZ330/PTZ330N

<b>FW version</b>	<b>V.61</b>
Release date	2020/10/14
New features	<ol style="list-style-type: none"> <li>1. Long pressing remote control button “Pan-Tilt Fast” turns on RTMP.</li> <li>2. Long pressing remote control button “Pan-Tilt Slow” turns off RTMP.</li> <li>3. Long pressing remote control button “EV+” turns on SmartShoot.</li> <li>4. Long pressing remote control button “EV- ”to turn off SmartShoot.</li> <li>5. PTZ330 now supports LDC(LENS Distortion Correction).</li> <li>6. Added support for PTZ manager.</li> <li>7. Added support for Captureshare.</li> <li>8. Added support for SRT.</li> </ol> 
Known Issues	<ol style="list-style-type: none"> <li>1. Web GUI has known compatibility issue with the Apple MAC Safari browser. Please use the Chrome browser on Apple devices for the meantime.</li> <li>2. When the video mode via the web is set to IP streaming only or NDI only; then when the USB port is connected to a PC, users will still see the device name on the PC, but will not have any USB streaming output.</li> </ol>

FAQ (For PTZ310N and PTZ330N models only):

There are 4 types of video modes that can be selected and each one only supports a single function:

- Stream only: Supports RTSP/RTMP only
- USB: Supports USB port output only
- USB + Streaming: Supports RTSP/RTMP and USB simultaneously.
- NDI: Supports NDI output only.



For more technical help, please visit: <https://www.averusa.com/pro-av/support/>

To access the AVer knowledgebase, visit: <https://averusa.force.com/support/s/>

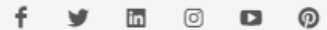
To file for support, visit: <https://averusa.force.com/support/s/contactsupport>

#### AVer USA

668 Mission Ct.,  
Fremont, CA 94539

Phone: 1 (408) 263 3828

Fax: 1 (408) 263 8132



#### Tech Support

✉ support.usa@aver.com

📞 1 (877) 528 7824

