

Q-SYS™ Plugin for PTZ Cameras

User Manual



DISCLAIMER

No warranty or representation, either expressed or implied, is made with respect to the contents of this documentation, its quality, performance, merchantability, or fitness for a particular purpose. Information presented in this documentation has been carefully checked for reliability; however, no responsibility is assumed for inaccuracies. The information contained in this documentation is subject to change without notice. In no event will AVer Information Inc. be liable for direct, indirect, special, incidental, or consequential damages arising out of the use or inability to use this product or documentation, even if advised of the possibility of such damages.

TRADEMARKS

“AVer” is a trademark owned by AVer Information Inc. Other trademarks used herein for description purpose only belong to each of their companies.

COPYRIGHT

©2023 AVer Information Inc. All rights reserved. | July 12, 2023

All rights of this object belong to AVer Information Inc. Reproduced or transmitted in any form or by any means without the prior written permission of AVer Information Inc. is prohibited. All information or specifications are subject to change without prior notice.

More Help

For FAQs, technical support, software and user manual download, please visit:

Headquarters

Download Center: <https://www.aver.com/download-center>

Technical Support: <https://www.aver.com/technical-support>

USA Branch Office

Download Center: <https://www.averusa.com/pro-av/support>

Technical Support: <https://averusa.force.com/support/s/contactsupport>

Europe Branch Office

Download Center: <https://www.avereurope.com/download-center>

Technical Support: <https://www.avereurope.com/technical-support>

Contact Information

Headquarters

AVer Information Inc.

<https://www.aver.com>

8F, No.157, Da-An Rd., Tucheng Dist., New Taipei City 23673, Taiwan

Tel: +886 (2) 2269 8535

USA Branch Office

AVer Information Inc., Americas

<https://www.averusa.com>

668 Mission Ct., Fremont, CA 94539, USA

Tel: +1 (408) 263 3828

Toll-free: +1 (877) 528 7824

Technical support: support.usa@aver.com

Europe Branch Office

AVer Information Europe B.V.

<https://www.avereurope.com>

Westblaak 134, 3012 KM, Rotterdam, The Netherlands

Tel: +31 (0) 10 7600 550

Technical support: eu.rma@aver.com

Japan Branch Office

アバー・インフォメーション株式会社

<https://jp.aver.com>

〒160-0023 日本東京都新宿区西新宿 3-2-26 立花新宿ビル 7 階

Tel: +81 (0) 3 5989 0290

テクニカル・サポート: <https://jp.aver.com/technical-support>

Vietnam Branch Office

Công ty TNHH AVer Information (Việt Nam)

Tầng 5, 596 Nguyễn Đình Chiểu, P.3, Quận 3,

Thành phố Hồ Chí Minh 700000, Việt Nam

Tel: +84 (0) 28 22 539 211

Contents

Overview	1
System Requirement	1
Supported AVer Pro AV Cameras	2
Getting Started	3
Install Q-SYS™ Designer	3
Install Q-SYS™ Plugin for PTZ Cameras.....	3
Uninstall Q-SYS™ Plugin for PTZ Cameras	5
Q-SYS™ Designer Interface.....	6
Configure Q-SYS™ Plugin for PTZ Cameras.....	7
Insert Q-SYS™ Plugin for PTZ Cameras to the Schematic	7
Select Configurable Components.....	8
Configure Components in User Control Interfaces(UCI).....	9
Emulate Connection and Control.....	10
AVer Camera Plugin Control Panel	11
Save to Core and Run Connection.....	13

Overview

Q-SYS™ Designer software enables users to create designs for native Q-SYS™ Platform system and supports the integration of the greater Q-SYS™ ecosystem. Download **Q-SYS™ Designer** here:

<https://www.qsys.com/resources/software-and-firmware/q-sys-designer-software/>.

With **AVer Q-SYS™ Plugin for PTZ Cameras**, operating PTZ control is fast and instinctive. The preset points and the tracking control provide you smooth and effortless video conferencing and streaming experience.

System Requirement

For **Q-SYS™ Designer** system requirements, please visit:

<https://help.qsys.com/>

Scripting License

All plugins when loaded to Q-SYS system requires a Q-SYS Scripting License and will not function without it. For more details, please visit:

https://help.qsys.com/q-sys_9.8/#Core_Manager/Core_Management/Licensing.htm?Highlight=scripting

About Q-SYS™

Since its inception in 2009, Q-SYS™ has been architected to deliver seamless, unified, and scalable human experiences. With established solutions across Corporate, Education, Hospitality, Venues & Events, Cinema, Government, Healthcare, and Transportation, Q-SYS™ raises the bar for both live and virtual experiences by uniting hardware and software partners, developers, and creators. Headquartered in Costa Mesa, CA, Q-SYS™ has regional offices in Sinsheim (Germany), Boulder (Colorado), Bengaluru (India) and Hong Kong, along with training, market development, sales/support offices and distribution facilities located throughout North and South America, Europe, Asia and the Middle East. For more information, please visit: <https://www.qsys.com/about-us/>.

Supported AVer Pro AV Cameras

PTCV2 Series	PTC500 Series	PTC330 Series	PTC310 Series	PTC115 Series
PTC330UV2 <i>TR333V2</i>	PTC500+ <i>TR530+</i>	PTC330 <i>TR331</i>	PTC310 <i>TR311</i>	PTC115 <i>TR320</i>
PTC320UNV2 <i>TR323NV2</i>		PTC330N <i>TR331N</i>	PTC310U <i>TR313</i>	PTC115+ <i>TR320+</i>
PTC320UV2		PTC330W <i>TR333</i>	PTC310H	
PTC310UV2 <i>TR313V2</i>			PTC310N <i>TR311N</i>	
PTC310HWV2 <i>TR311HWV2</i>			PTC310UN <i>TR313N</i>	
			PTC310HN	
			PTC310HW	
			PTC310UW	
			PTC310W	

PTZ330V2 Series	PTZ310V2 Series	PTZ330 Series	PTZ310 Series
PTZ330V2	PTZ310V2	PTZ330	PTZ310
PTZ330NV2	PTZ310NV2	PTZ330N	PTZ310N
PTZ330UV2	PTZ310UV2		
PTZ330UNV2	PTZ310UNV2		

DL Series


DL10	DL30
------	------

*US model name in italics

**Orange models do not support auto tracking function.

Getting Started

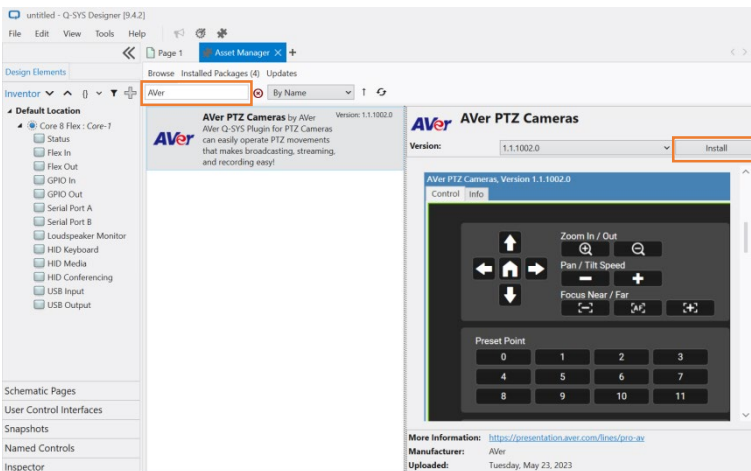
Install Q-SYS™ Designer

1. Follow the on-screen guide to install **Q-SYS™ Designer** on your computer.
2. Double click on the icon  to launch the app.

Install Q-SYS™ Plugin for PTZ Cameras

To install **Q-SYS™ Plugin for PTZ Cameras** in **Q-SYS™ Designer**, you can:

- **Install from Q-SYS™ Designer Asset Manager:**
 1. Open Q-SYS™ Designer > click **Tools** in Main Menu > **Show Asset Manager**.
 2. Type “**AVer**” in the searching box > select **AVer PTZ Cameras** > click **Install**.
 3. If success, you will see PTZ Cameras plugin under **Plugins > User > AVer Information** in **Q-SYS™ Designer**.



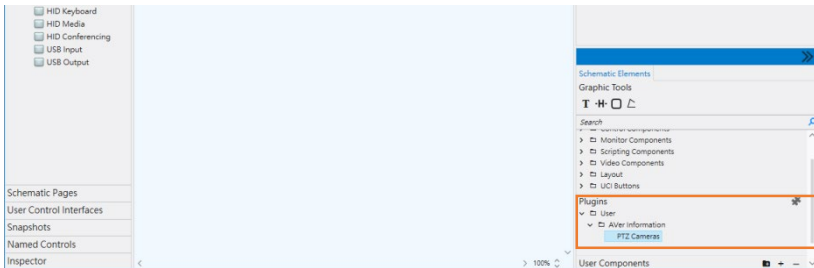
- **Install from your computer:**

1. Download **Q-SYS™ Plugin for PTZ Cameras** file to your computer from AVer Download Center.

(<https://www.aver.com/download-center>)

2. Double click the downloaded file to install the plugin.

3. If success, you will see PTZ Cameras plugin under **Plugins > User > AVer Information in Q-SYS™ Designer.**

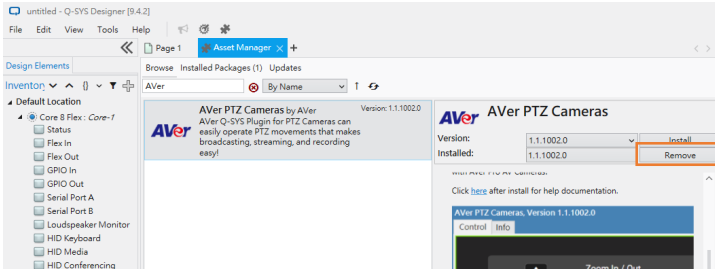


Uninstall Q-SYS™ Plugin for PTZ Cameras

To uninstall **Q-SYS™ Plugin for PTZ Cameras**, you can:

- **Remove from Asset Manager:**

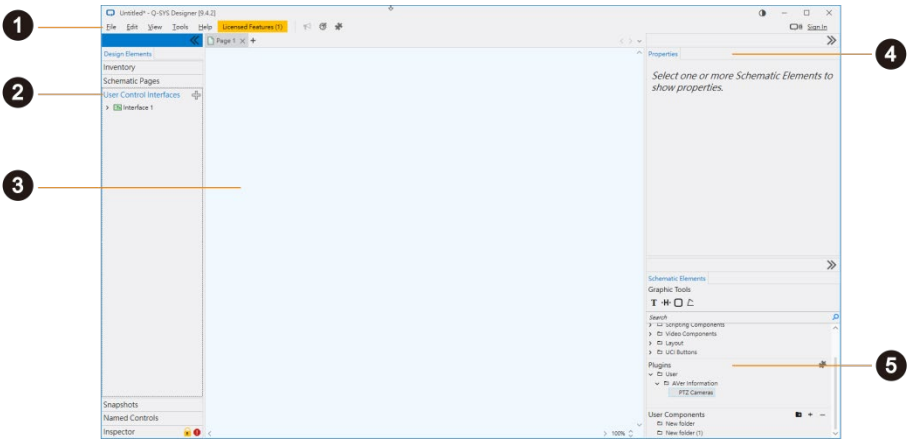
Find **AVer PTZ Cameras** in **Asset Manager** > click **Remove**.



- **Delete from computer:**

1. Enter location path in your file explorer:
C:\Users\[Account]\Documents\QSC\Q-SYS Designer\Plugins to see **Q-SYS Plugin for PTZ Cameras** file.
2. Hover over the file and right click your mouse > **Delete**.

Q-SYS™ Designer Interface



1. Main Menu:

Provide quick access to commands and functions.

2. User Control Interfaces (UCI):

Create workspace to design and edit PTZ camera control panels.

3. The Schematic:

Drag and drop files to schematic for further views and edits. You can have more than one page of schematic diagrams.

4. Properties:

Check and edit the properties of selected components.

5. Plugins:

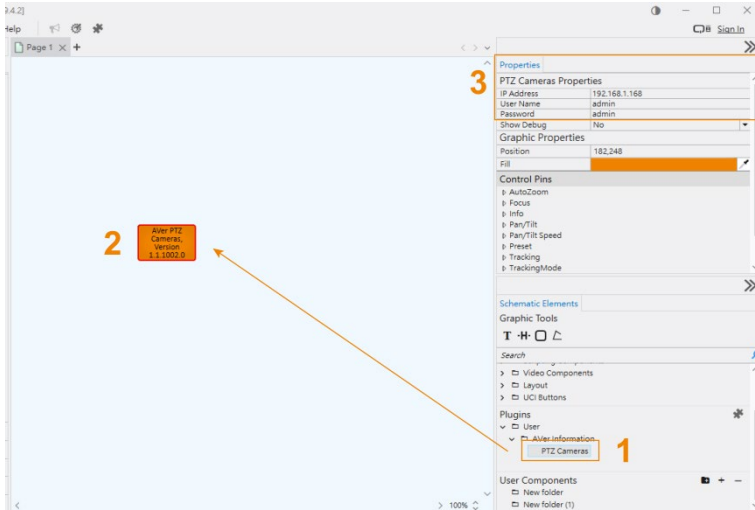
Provide integration of licensed third-party plugins.

- Asset Manager: Include installed plugins downloaded from Asset Manager.

To open Asset Manager, click the **Puzzle** icon.

- User: Include manually installed plugins by users (with .qplugx files) and legacy plugins bundled with previous versions of Q-SYS™ Designer.

Configure Q-SYS™ Plugin for PTZ Cameras



Insert Q-SYS™ Plugin for PTZ Cameras to the Schematic:

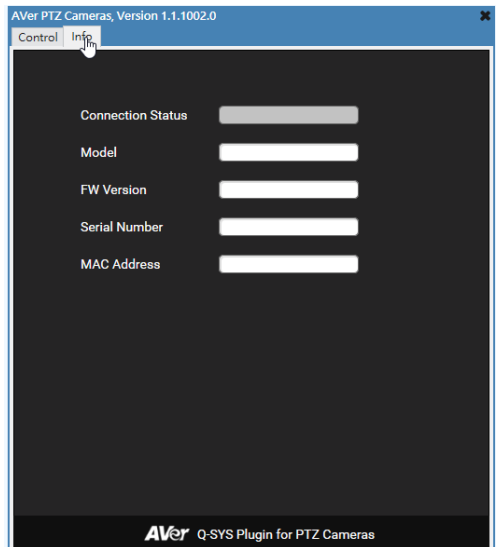
1. Double click on **User** file under **Plugins** section > double click **Aver Information** > **PTZ Cameras**.
2. Drag **PTZ Camera** plugin and drop it in the Schematic.
3. Enter **PTZ Camera Plugin Properties** including IP Address, User Name and Password to connect with your AVer PTZ camera.

Select Configurable Components:

4. Double click on the **AVer PTZ Camera plugin** to show configurable components.
5. Click and drag over in the component window to select AVer Camera control panel components. The chosen components will be highlighted with red border.
6. Click **Edit** in Main Menu > **Copy**, or press **Ctrl + C** to copy.



Camera Control Panel



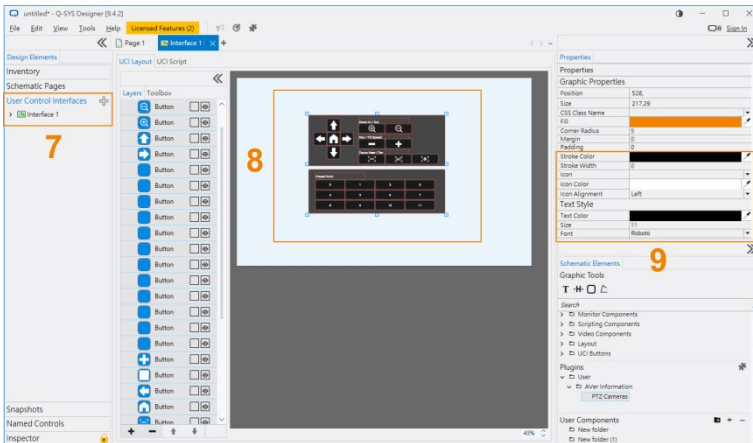
Camera Info

Configure Components in User Control Interfaces(UCI)

7. Click **User Control Interfaces** > click the **Plus** icon to create a UCI.
8. Click **Edit** in Main Menu > **Paste**, or press **Ctrl + P** to paste the copied AVer Camera control panel components to the Schematic.
9. To customize control panel components, you can:
 - Click and drag the bounding box to resize.
 - Double click text box to rename.
 - Click the icon and change the icon color in **Properties**.
 - Right click on your mouse to open context menu for more commands.

To remove components:

- Select the component from the Schematic, or select from **Layers**, press **Del** on your keyboard.
- Select the component, click **Edit** in Main Menu > **Delete**.

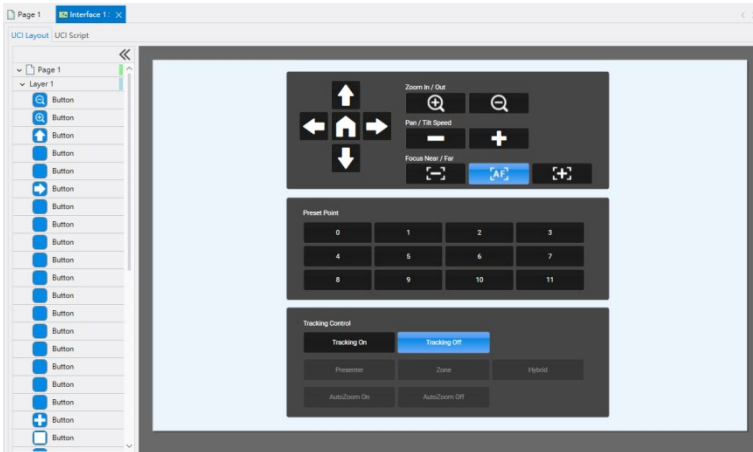


Emulate Connection and Control

After customizing AVer Camera control panel components, you can run tests by emulating the connection.

To emulate connection and control:

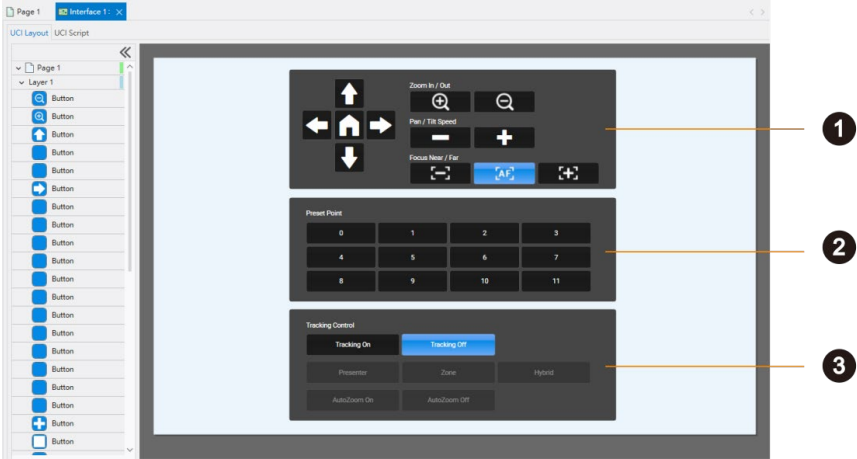
1. Click **File** in Main Menu> **Emulate**.
2. When you see a pop-up window marked “Design License Requirements Have Changed”, click **OK** to continue.
3. When the connection is completed, click the control panel buttons to control your PTZ camera.



[Note]

1. When successfully connected, all the icons will turn white and the buttons are clickable; if not, disconnect the emulation and check **Properties** in **Page**.
2. You can't customize the panel components or change any settings until you disconnect emulation. To disconnect, click **File** in Main Menu > **Disconnect**.

AVer Camera Plugin Control Panel



1. PTZ and Focus

Item	Description
Direction Buttons and Home Button	<ul style="list-style-type: none"> ● Click direction buttons to adjust camera angle. ● Click Home button to go back to the default camera position.
Zoom In/Out	Click the Plus/Minus buttons to zoom in/out.
Pan/Tilt Speed	Use the Plus/Minus buttons to adjust the pan and tilt speed of the camera.
Focus Near/Far	<ul style="list-style-type: none"> ● Click on the AF icon button to switch from auto focus to manual focus. ● Click on Minus/AF/Plus icon buttons to focus on near/far object/area.

2. Preset Point

Item	Description
Preset Point	Click on a number to load a pre-configured preset point on UCI.

3. Tracking Control

Item	Description
Tracking On/Off	Click the buttons to switch on/off tracking mode.
Presenter/Zone/Hybrid	Click Tracking On to select a tracking mode: <ul style="list-style-type: none"><li data-bbox="563 298 953 357">● Presenter Mode: The camera tracks the presenter.<li data-bbox="563 362 953 421">● Zone Mode: The camera only tracks certain zone.<li data-bbox="563 426 1020 517">● Hybrid Mode: The camera both tracks the presenter and focuses on the certain zone.
Auto Zoom On/Off	Click the buttons to switch on/off Auto Zoom. <ul style="list-style-type: none"><li data-bbox="563 588 1009 746">● Auto Zoom is only available under Presenter and Hybrid Mode. The camera will track the presenter's movement to zoom in and out automatically.

Save to Core and Run Connection

When finished configuring the control panel, save your design on the core processor to run connection and control AVer PTZ Cameras on devices with compatible software.

To save and run connection:

Click **File** in Main Menu > **Save to Core & Run**.